

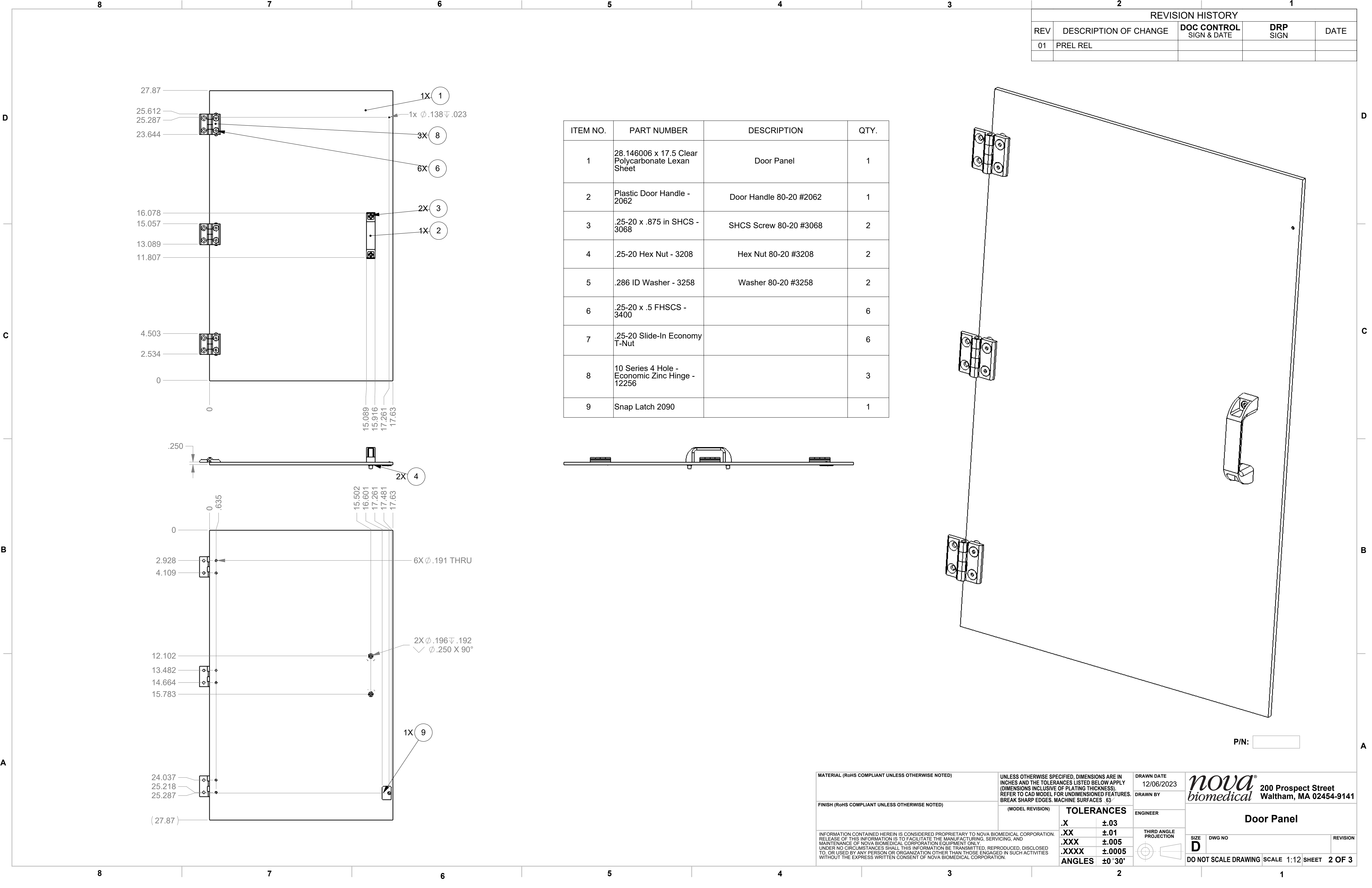
NOTE: THIS DRAWING USES  
10 SERIES T-SLOTS. ACTUAL  
DRYER GUARD STRUCTURE  
USES 15 SERIES T-SLOTS

REVISION HISTORY				
REV	DESCRIPTION OF CHANGE	DOC CONTROL SIGN & DATE	DRP SIGN	DATE
01	PREL REL			

ITEM NO.	PART NUMBER	DESCRIPTION	QTY.
1	21.7 inch 1010 Frame	21.7 in 10 series T-slot	4
2	30 inch 1010 Frame	30 in 10 series T-slot	4
3	57.5 inch 1010 Frame	57.5 in 10 series T-slot	4
4	28 inch 1010 Frame	28 in 10 series T-slot	4
5	90 Degree Bracket Assembly		16
6	14-20 Tnut - 3287		20
7	14-20 Tnut - 3280		20
8	T Bracket Assembly		4
9	47065T323	CLR Polycarbonate Lexan Panel for T-slot	2
10	47065T323	CLR Polycarbonate Lexan Panel for T-slot	2
11	.25-20 x .5 FHSCS - 3400		6
12	Magnetic Door Latch 2090	Magnetic Door Latch 80-20 - #2090	1
13	Door Panel Assembly		1
14	47065T323	CLR Polycarbonate Lexan Panel for T-slot	1
15	47065T323	CLR Polycarbonate Lexan Panel for T-slot	2
16	23.7 inch 1010 Frame	23.7 in 10 series T-slot	2
17	61.5 inch 1010 Frame	61.5 in 10 Series T-slot	2
18	Air Knife for Conveyor #1	Air Knife for Conveyor	1
19	Air Knife for Conveyor #2	Air Knife for Conveyor	1
20	.25-20 x .375 FBHSCS Screw 3390		16
21	.25-20 T-Nut 3382		20
22	Corner Bracket 4108		8
23	3192T44	Pipe Clamp Used in Model -McMaster	4
24	91251A537	Black-Oxide Alloy Steel Socket Head Screw	4
25	Back 28.146006 x 17.5 Clear Polycarbonate Lexan Sheet	CLR Polycarbonate Lexan Panel for T-slot	1
26	.25-20 Slide-In Economy T-Nut		6
27	Threaded Swivel Caster - 2298	Caster from 80-20; Includes Brakes	4

P/N:


MATERIAL (RoHS COMPLIANT UNLESS OTHERWISE NOTED)		UNLESS OTHERWISE SPECIFIED, DIMENSIONS ARE IN INCHES AND THE TOLERANCES LISTED BELOW APPLY (DIMENSIONS INCLUSIVE OF PLATING THICKNESS). REFER TO CAD MODEL FOR UNDIMENSIONED FEATURES. BREAK SHARP EDGES. MACHINE SURFACES .63"		DRAWN DATE 12/06/2023		<div><div><div>nova<sup>®</sup></div><div>biomedical</div></div><div>200 Prospect Street Waltham, MA 02454-9141</div></div>	
FINISH (RoHS COMPLIANT UNLESS OTHERWISE NOTED)		(MODEL REVISION)		DRAWN BY			
INFORMATION CONTAINED HEREIN IS CONSIDERED PROPRIETARY TO NOVA BIOMEDICAL CORPORATION. RELEASE OF THIS INFORMATION IS TO FACILITATE THE MANUFACTURING, SERVICING, AND MAINTENANCE OF NOVA BIOMEDICAL CORPORATION EQUIPMENT ONLY. UNDER NO CIRCUMSTANCES SHALL THIS INFORMATION BE TRANSMITTED, REPRODUCED, DISCLOSED TO, OR USED BY ANY PERSON OR ORGANIZATION OTHER THAN THOSE ENGAGED IN SUCH ACTIVITIES WITHOUT THE EXPRESS WRITTEN CONSENT OF NOVA BIOMEDICAL CORPORATION.		TOLERANCES		ENGINEER		<div>Dryer Guard Complete Assembly</div>	
				THIRD ANGLE PROJECTION			
		.X ±.03					
		.XX ±.01					
		.XXX ±.005					
.XXXX ±.0005							
		ANGLES ±0°30'		SIZE DWG NO		REVISION	
				D		DO NOT SCALE DRAWING SCALE 1:12 SHEET 1 OF 3	



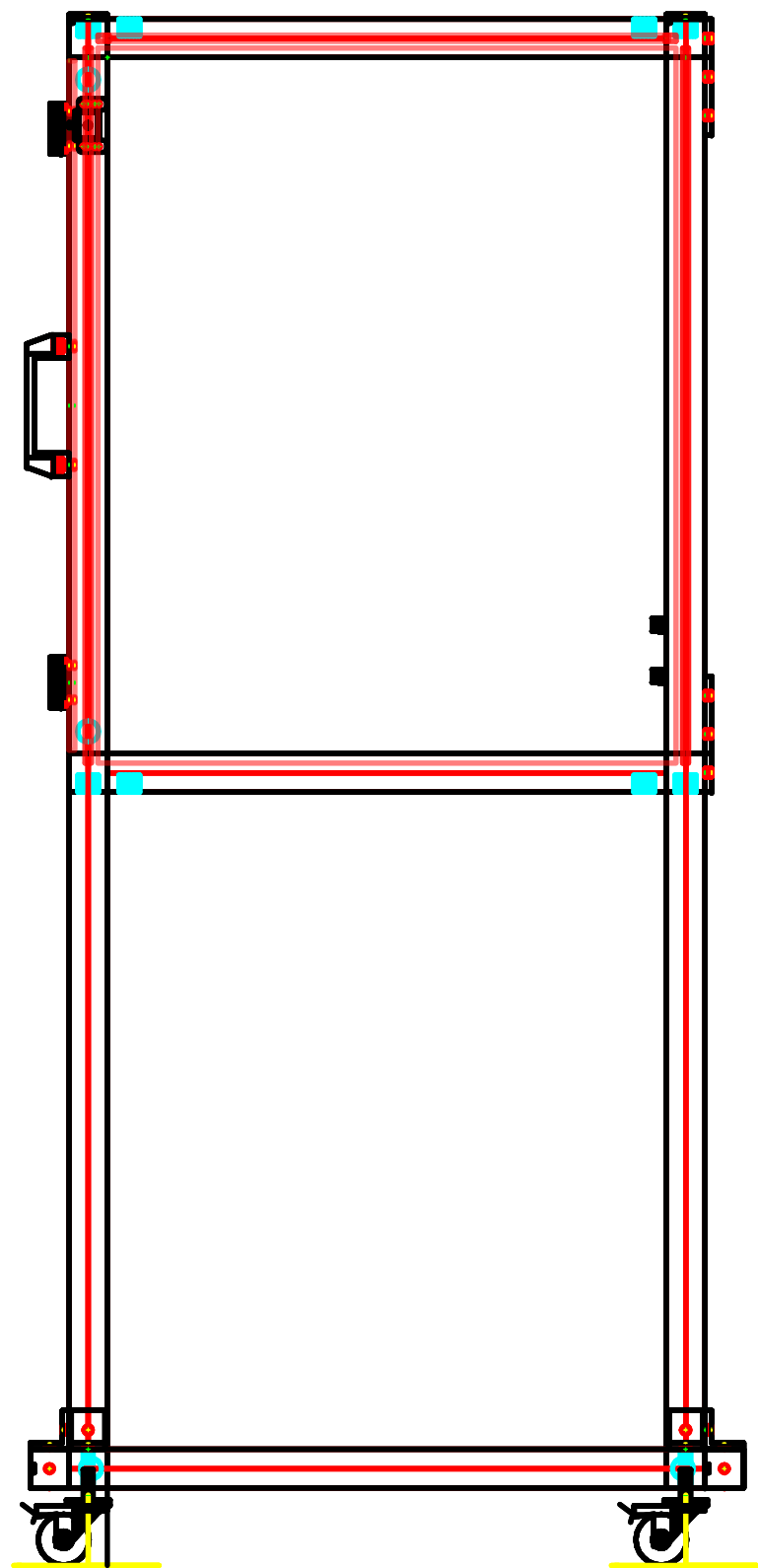
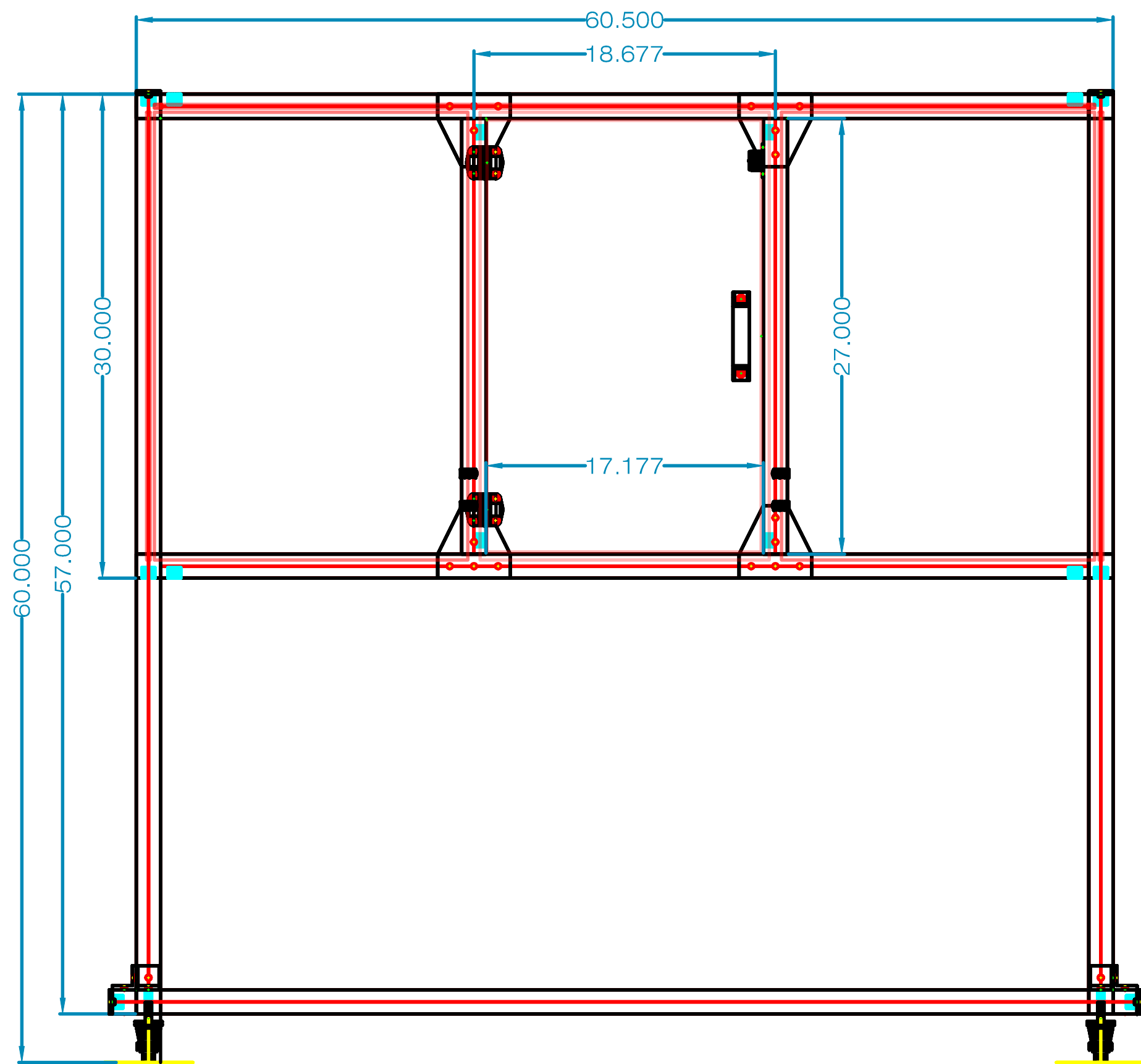
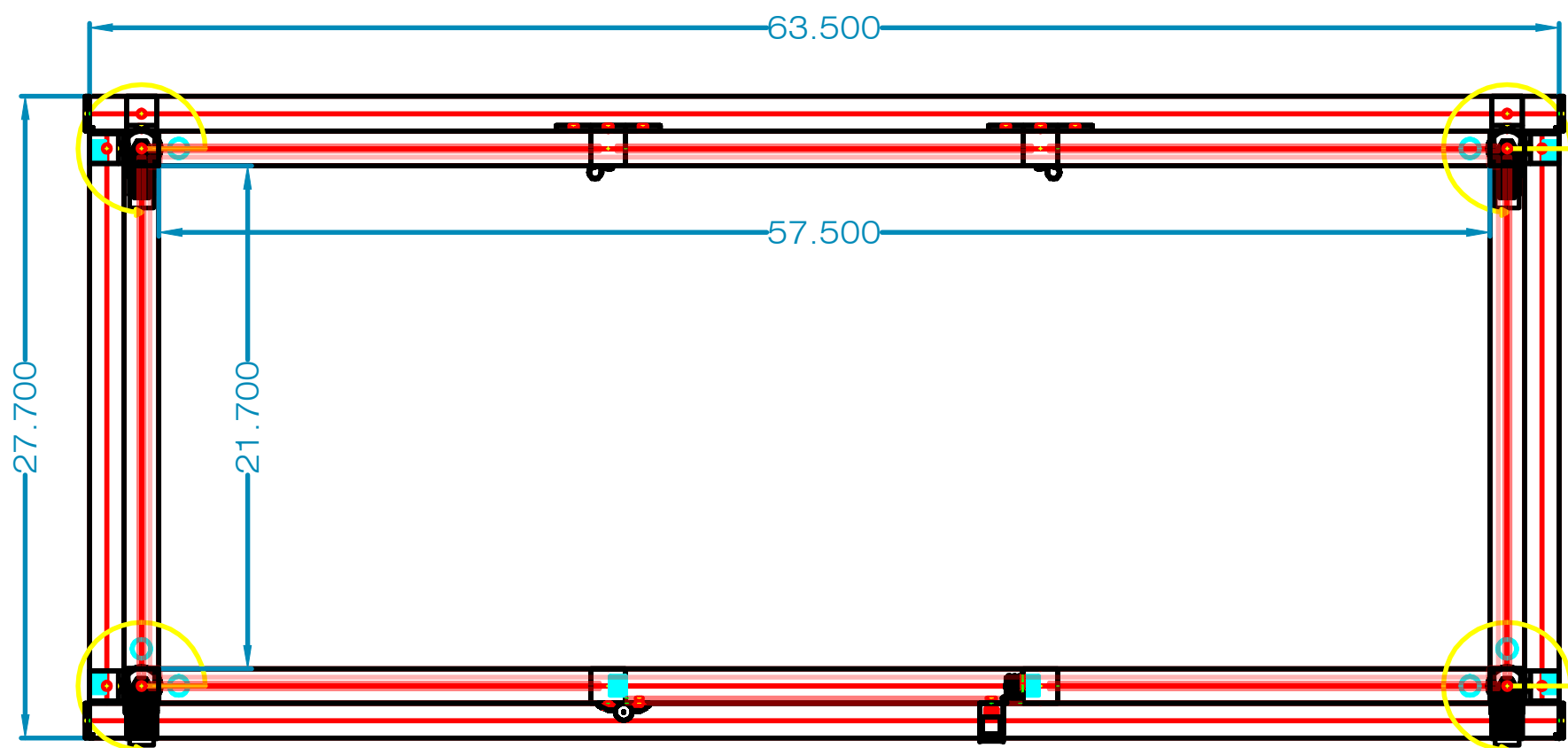
ITEM NO.	PART NUMBER	DESCRIPTION	QTY.
1	28.146006 x 17.5 Clear Polycarbonate Lexan Sheet	Door Panel	1
2	Plastic Door Handle - 2062	Door Handle 80-20 #2062	1
3	.25-20 x .875 in SHCS - 3068	SHCS Screw 80-20 #3068	2
4	.25-20 Hex Nut - 3208	Hex Nut 80-20 #3208	2
5	.286 ID Washer - 3258	Washer 80-20 #3258	2
6	.25-20 x .5 FHSCS - 3400		6
7	.25-20 Slide-In Economy T-Nut		6
8	10 Series 4 Hole - Economic Zinc Hinge - 12256		3
9	Snap Latch 2090		1



REVISION HISTORY				
REV	DESCRIPTION OF CHANGE	DOC CONTROL SIGN & DATE	DRP SIGN	DATE
01	PREL REL			

MATERIAL (RoHS COMPLIANT UNLESS OTHERWISE NOTED)		UNLESS OTHERWISE SPECIFIED, DIMENSIONS ARE IN INCHES AND THE TOLERANCES LISTED BELOW APPLY (DIMENSIONS INCLUSIVE OF PLATING THICKNESS). REFER TO CAD MODEL FOR UNDIMENSIONED FEATURES. BREAK SHARP EDGES. MACHINE SURFACES .63		DRAWN DATE 12/06/2023	<div><div><div>nova<sup>®</sup></div><div>biomedical</div></div><div>200 Prospect Street Waltham, MA 02454-9141</div></div>	
FINISH (RoHS COMPLIANT UNLESS OTHERWISE NOTED)		(MODEL REVISION)		DRAWN BY		
INFORMATION CONTAINED HEREIN IS CONSIDERED PROPRIETARY TO NOVA BIOMEDICAL CORPORATION. RELEASE OF THIS INFORMATION IS TO FACILITATE THE MANUFACTURING, SERVICING, AND MAINTENANCE OF NOVA BIOMEDICAL CORPORATION EQUIPMENT ONLY. UNDER NO CIRCUMSTANCES SHALL THIS INFORMATION BE TRANSMITTED, REPRODUCED, DISCLOSED TO, OR USED BY ANY PERSON OR ORGANIZATION OTHER THAN THOSE ENGAGED IN SUCH ACTIVITIES WITHOUT THE EXPRESS WRITTEN CONSENT OF NOVA BIOMEDICAL CORPORATION.		TOLERANCES		Door Panel		
		.X ±.03		THIRD ANGLE PROJECTION		
		.XX ±.01				
		.XXX ±.005				
		.XXXX ±.0005				
		ANGLES ±0° 30'		DO NOT SCALE DRAWING		
				SIZE D	DWG NO	REVISION
				SCALE 1:12 SHEET 2 OF 3		





**RECEIVED PO IS ACKNOWLEDGEMENT AND APPROVAL OF DESIGN**

TITLE	Dryer Guard Assembly	DRAWN BY		DATE	12/6/2023
CUSTOMER	Sakib Azgar	REVISED BY		DATE	
JOB NO.		SHEET	Layout		

ALL TECHNICAL ADVICE, RECOMMENDATIONS AND SERVICES ARE RENDERED BY THE SELLER FREE OF CHARGE. THEY ARE BASED ON TECHNICAL DATA WHICH THE SELLER BELIEVES TO BE RELIABLE AND ARE INTENDED FOR USE BY SKILLED PERSONS AT THEIR OWN RISK. THE SELLER ASSUMES NO RESPONSIBILITY TO BUYER FOR RESULTS OBTAINED OR DAMAGES INCURRED FROM THEIR USE. SUCH RECOMMENDATIONS, TECHNICAL ADVICE OR SERVICES ARE NOT TO BE TAKEN AS A LICENSE TO OPERATE UNDER OR INTENDED TO SUGGEST INFRINGEMENT OF ANY EXISTING PATENT.

