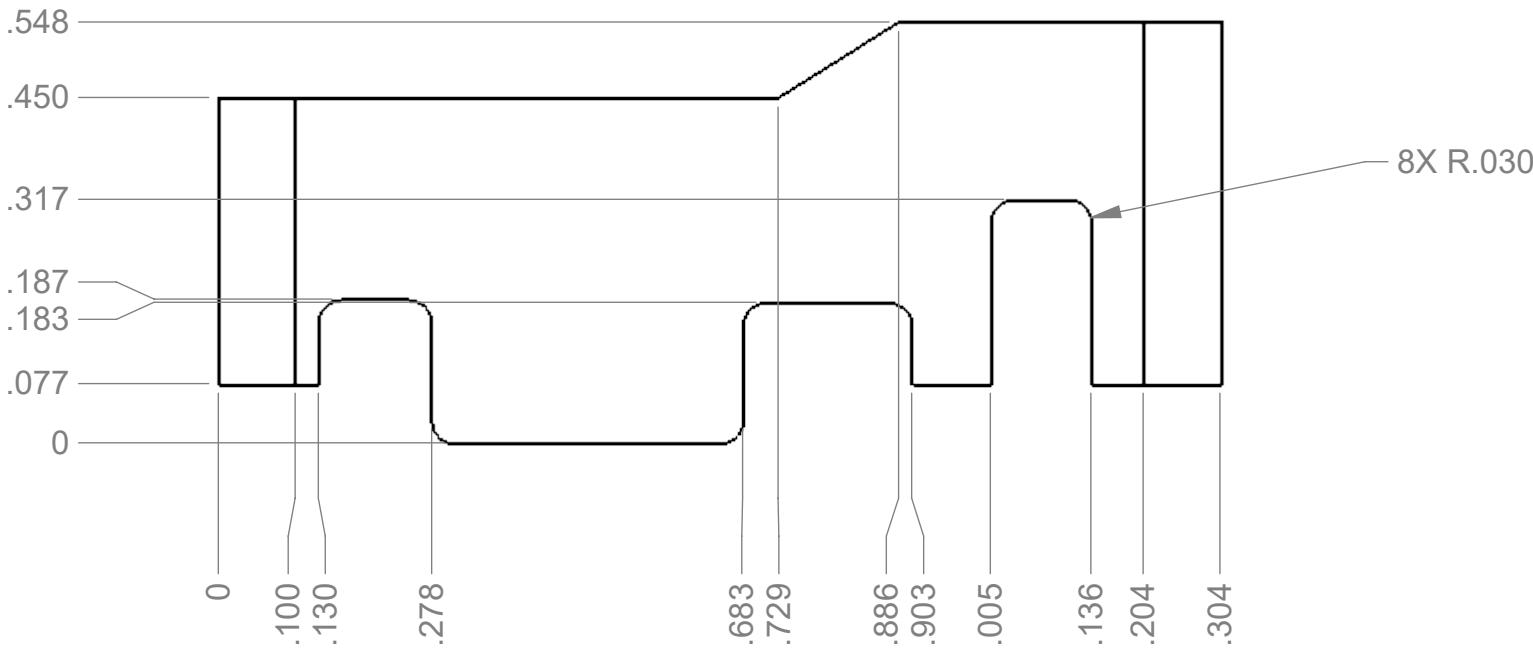
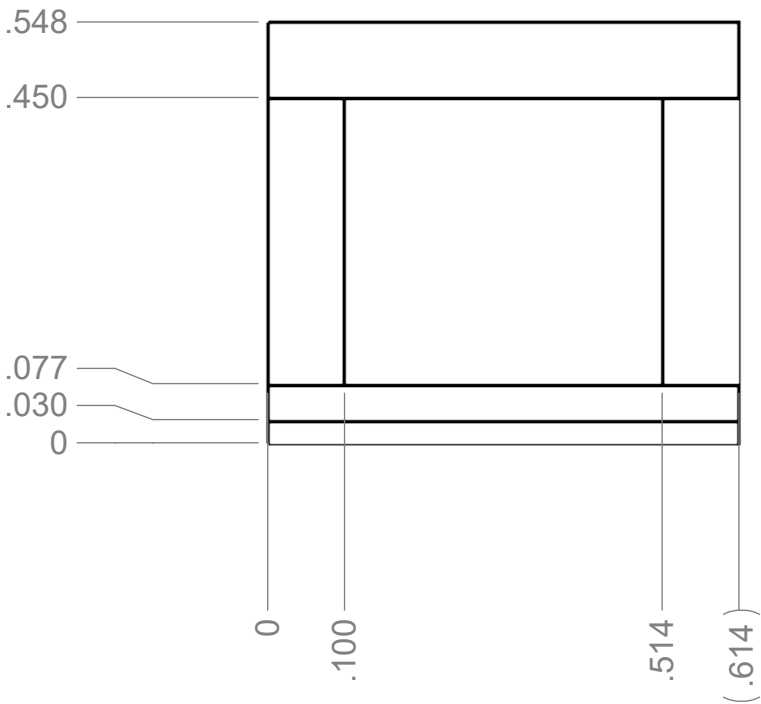
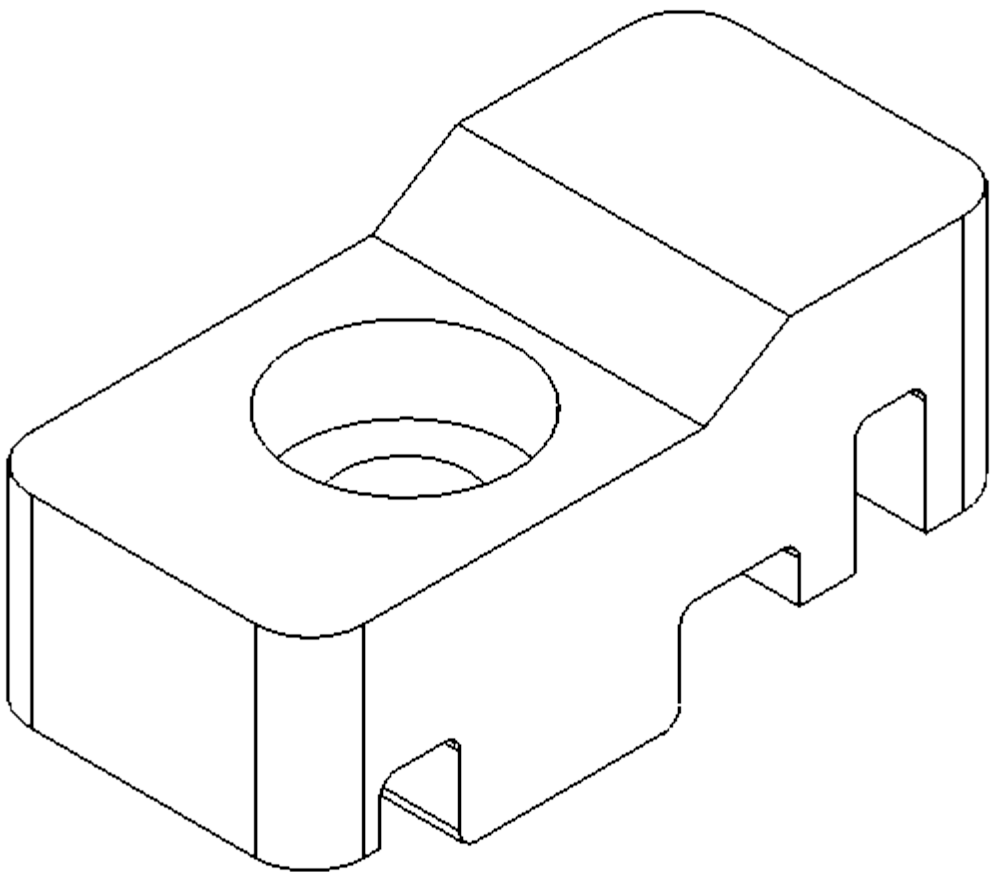
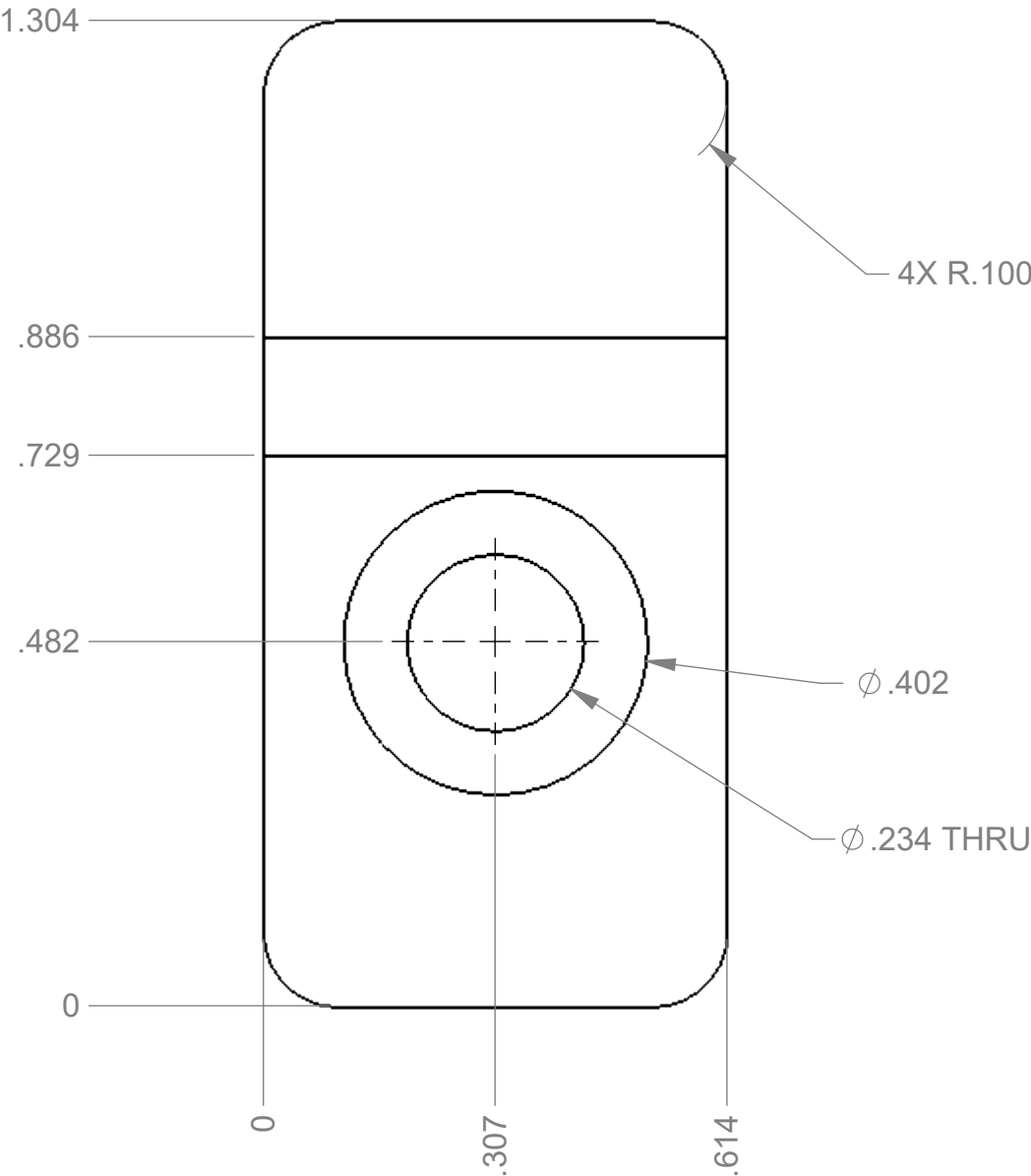


3

2

1

REVISION HISTORY				
REV	DESCRIPTION OF CHANGE	DOC CONTROL SIGN & DATE	DRP SIGN	DATE
01	PREL REL			



C

C

B

B

A

A

Project Name: CONTROLS SCREW HOLDER

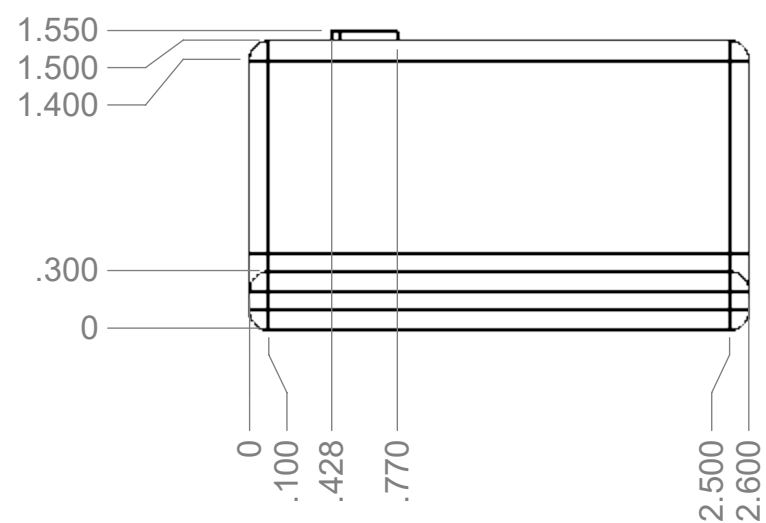
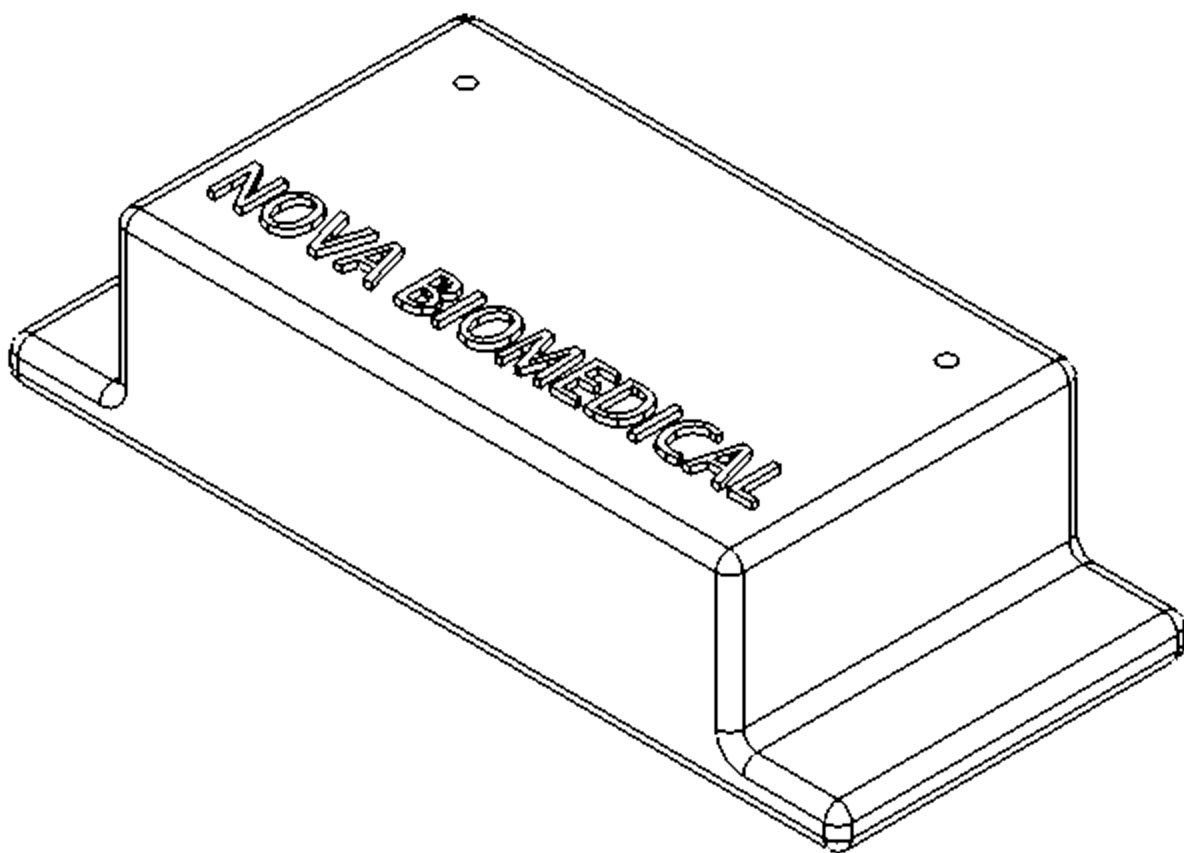
MATERIAL (RoHS COMPLIANT UNLESS OTHERWISE NOTED)		UNLESS OTHERWISE SPECIFIED, DIMENSIONS ARE IN INCHES AND THE TOLERANCES LISTED BELOW APPLY (DIMENSIONS INCLUSIVE OF PLATING THICKNESS). REFER TO CAD MODEL FOR UNDIMENSIONED FEATURES. BREAK SHARP EDGES. MACHINE SURFACES 63		DRAWN DATE 07/06/2023		<div><div>nova<sup>®</sup></div><div>biomedical</div></div> <div>200 Prospect Street Waltham, MA 02454-9141</div>			
ABS BLACK (3D PRINTED)				DRAWN BY SAKIB AZGAR					
FINISH (RoHS COMPLIANT UNLESS OTHERWISE NOTED)		(MODEL REVISION)		ENGINEER SAKIB AZGAR		<div><div>SIZE</div><div>C</div></div> <div>DWG NO</div> <div>DO NOT SCALE DRAWING</div> <div>SCALE 4:1</div> <div>SHEET 1 OF 1</div> <div>REVISION</div>			
INFORMATION CONTAINED HEREIN IS CONSIDERED PROPRIETARY TO NOVA BIOMEDICAL CORPORATION. RELEASE OF THIS INFORMATION IS TO FACILITATE THE MANUFACTURING, SERVICING, AND MAINTENANCE OF NOVA BIOMEDICAL CORPORATION EQUIPMENT ONLY. UNDER NO CIRCUMSTANCES SHALL THIS INFORMATION BE TRANSMITTED, REPRODUCED, DISCLOSED TO, OR USED BY ANY PERSON OR ORGANIZATION OTHER THAN THOSE ENGAGED IN SUCH ACTIVITIES WITHOUT THE EXPRESS WRITTEN CONSENT OF NOVA BIOMEDICAL CORPORATION.		TOLERANCES		THIRD ANGLE PROJECTION					
		.X ±.03							
		.XX ±.01							
		.XXX ±.005							
		.XXXX ±.0005							
		ANGLES ±0°30'							

3

2

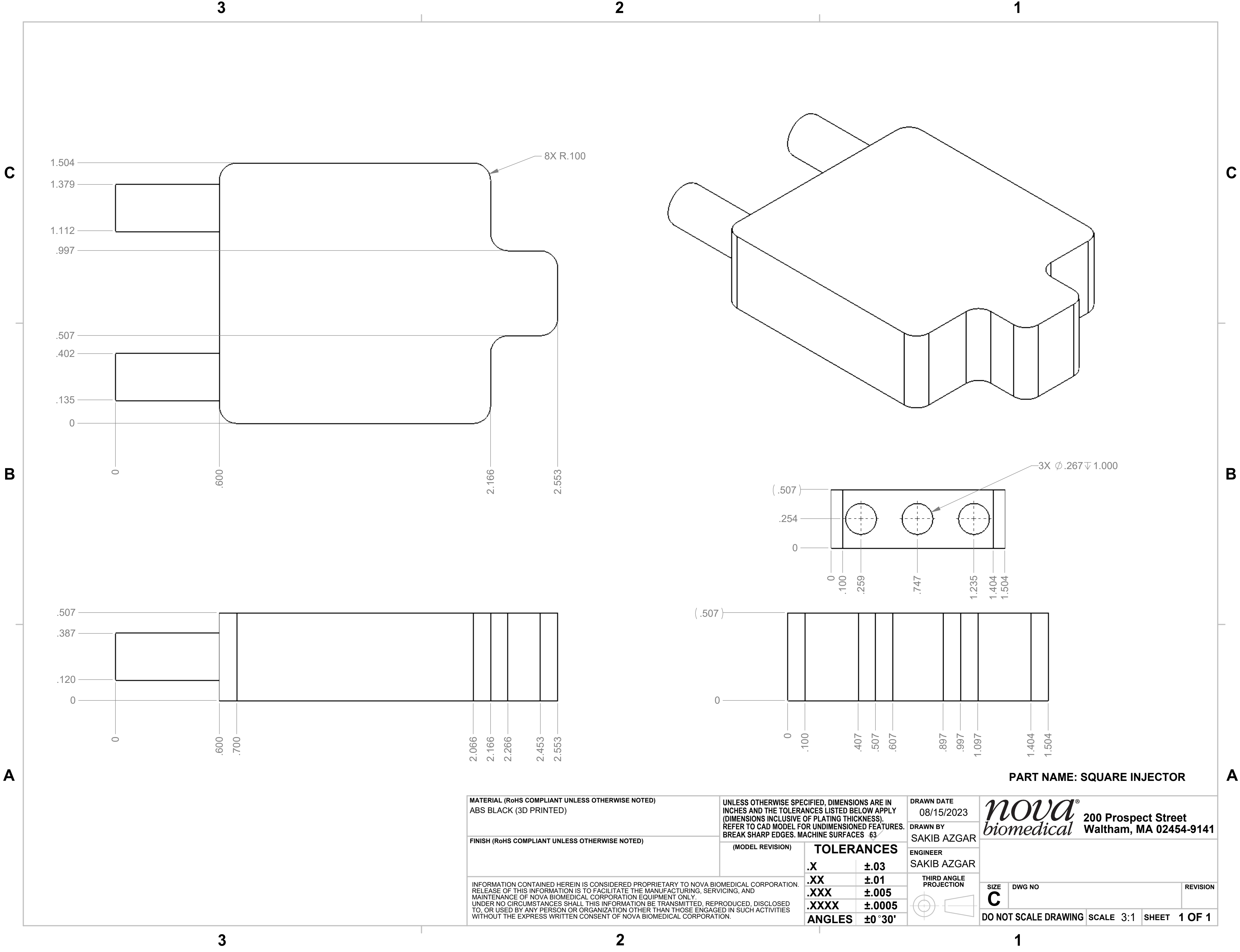
1

**C**



**A**

1



1

C

# A

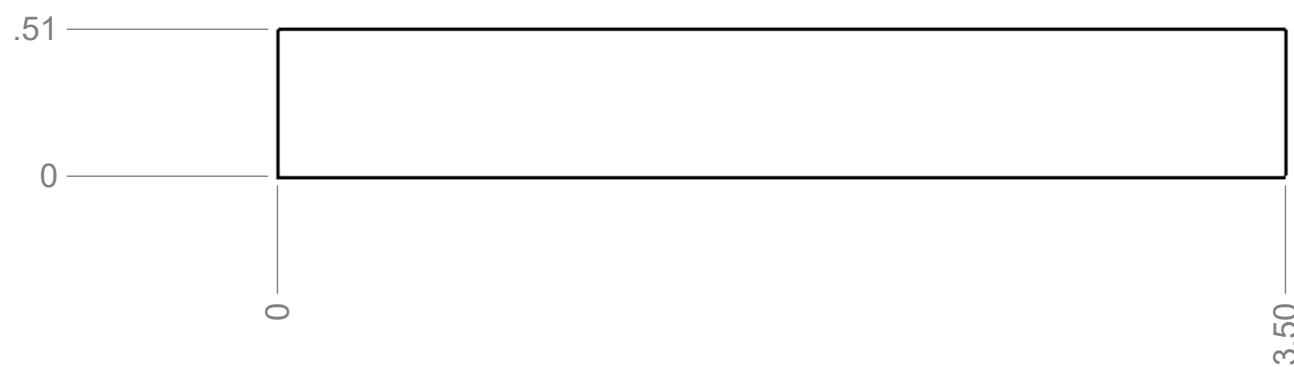
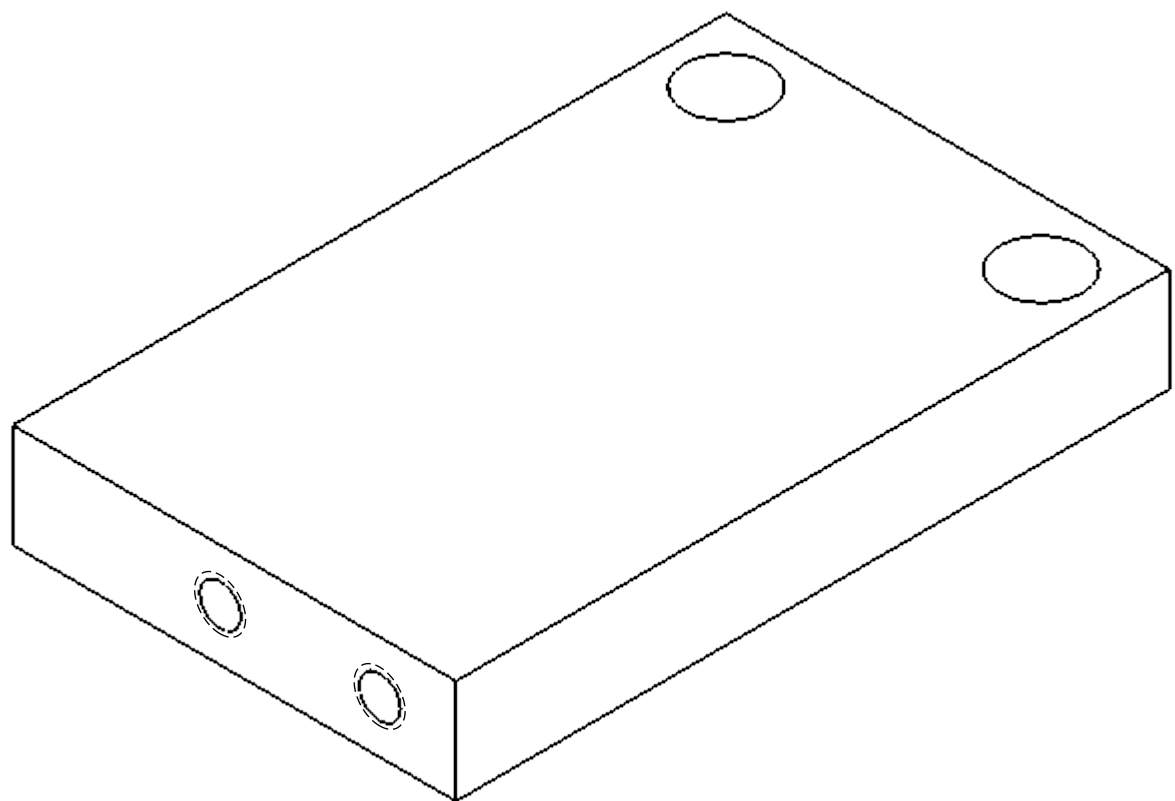
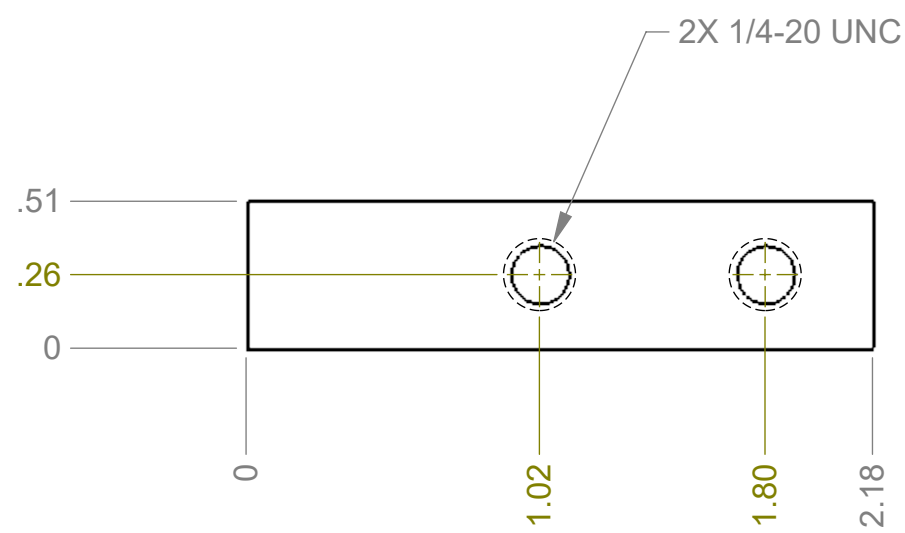
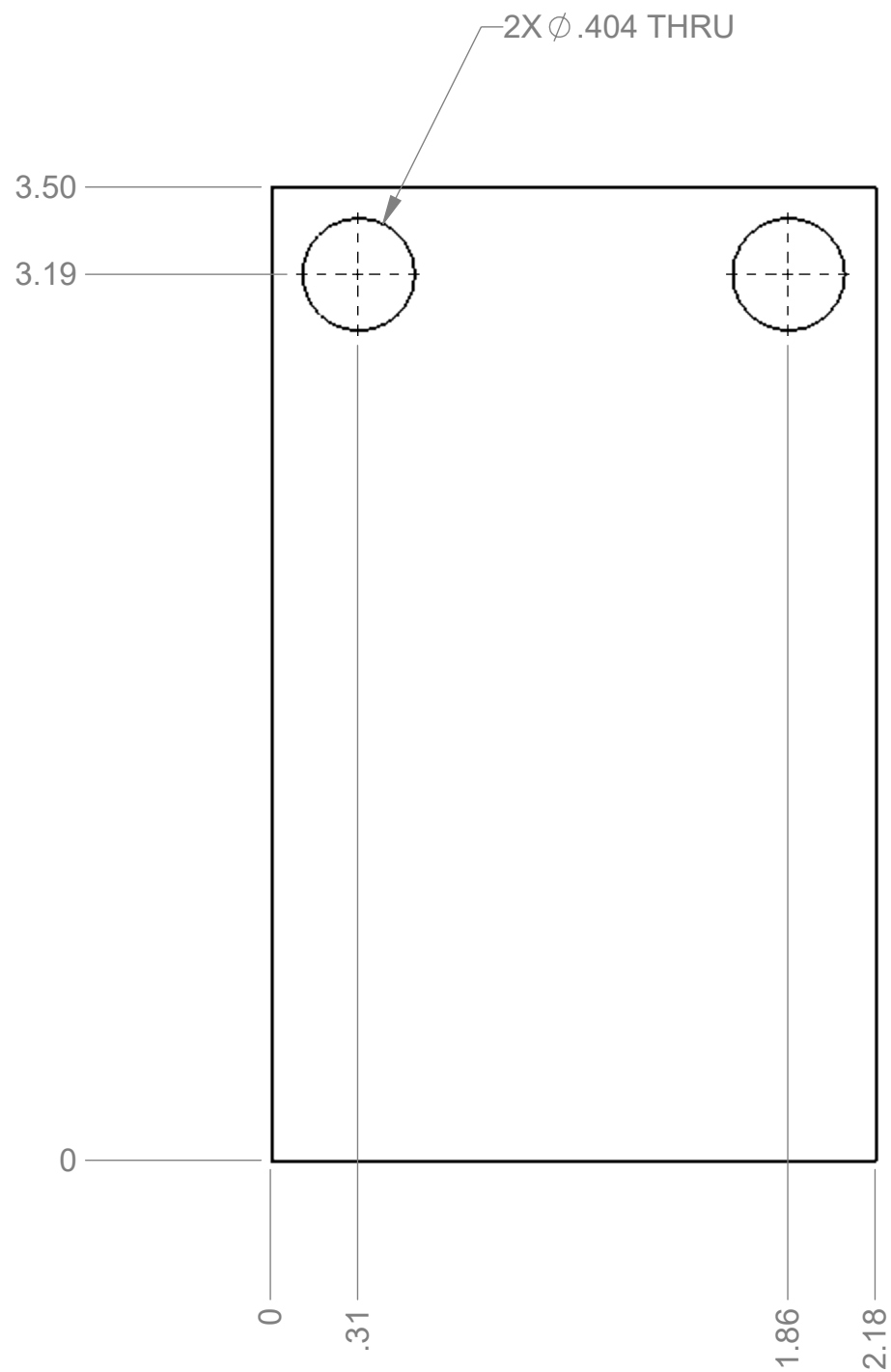
1

3

2


1

REVISION HISTORY				
REV	DESCRIPTION OF CHANGE	DOC CONTROL SIGN & DATE	DRP SIGN	DATE
01	PREL REL			



**MATERIAL: 6061 ALUMINUM**

**PART NAME: ARM, MOUNT, INDEXING PIECE**

MATERIAL (RoHS COMPLIANT UNLESS OTHERWISE NOTED) 6061 Aluminum		UNLESS OTHERWISE SPECIFIED, DIMENSIONS ARE IN INCHES AND THE TOLERANCES LISTED BELOW APPLY (DIMENSIONS INCLUSIVE OF PLATING THICKNESS). REFER TO CAD MODEL FOR UNDIMENSIONED FEATURES. BREAK SHARP EDGES. MACHINE SURFACES .63		DRAWN DATE 09/12/2023		<div><div><div>nova<sup>®</sup></div><div>biomedical</div></div><div>200 Prospect Street Waltham, MA 02454-9141</div></div>				
FINISH (RoHS COMPLIANT UNLESS OTHERWISE NOTED)		(MODEL REVISION)	TOLERANCES		DRAWN BY SAKIB AZGAR					
INFORMATION CONTAINED HEREIN IS CONSIDERED PROPRIETARY TO NOVA BIOMEDICAL CORPORATION. RELEASE OF THIS INFORMATION IS TO FACILITATE THE MANUFACTURING, SERVICING, AND MAINTENANCE OF NOVA BIOMEDICAL CORPORATION EQUIPMENT ONLY. UNDER NO CIRCUMSTANCES SHALL THIS INFORMATION BE TRANSMITTED, REPRODUCED, DISCLOSED TO, OR USED BY ANY PERSON OR ORGANIZATION OTHER THAN THOSE ENGAGED IN SUCH ACTIVITIES WITHOUT THE EXPRESS WRITTEN CONSENT OF NOVA BIOMEDICAL CORPORATION.			.X	±.03	ENGINEER SAKIB AZGAR		<div><div>SIZE C</div><div>DWG NO</div><div>REVISION</div></div> <div>DO NOT SCALE DRAWING</div> <div>SCALE 2:1</div> <div>SHEET 1 OF 1</div>			
			.XX	±.01	<div>THIRD ANGLE PROJECTION</div> <div></div>					
			.XXX	±.005						
			.XXXX	±.0005						
			ANGLES	±0° 30'						

# 3

2

1

C

# C

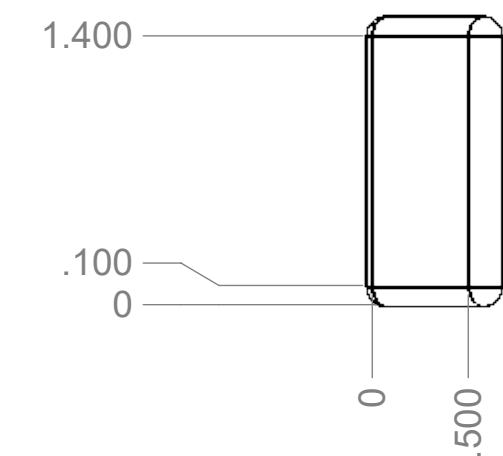
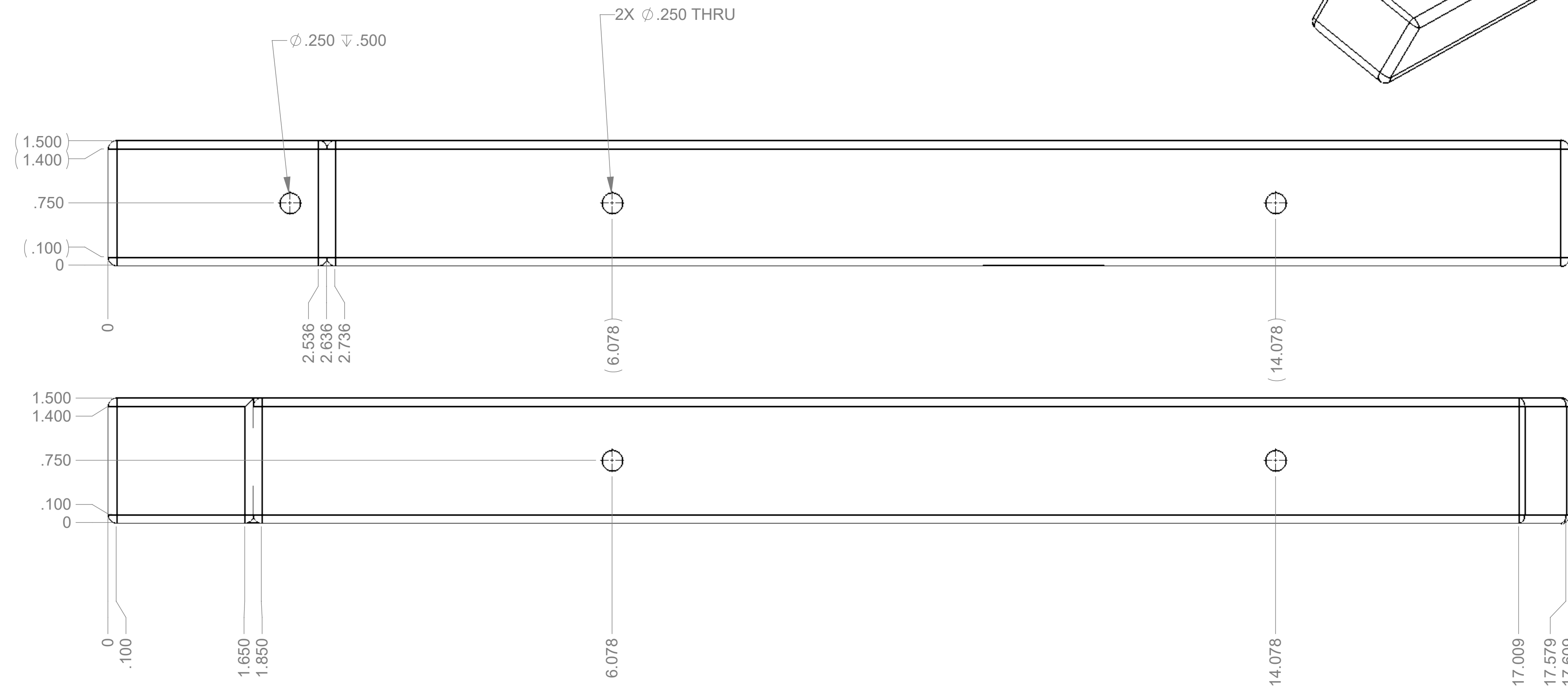
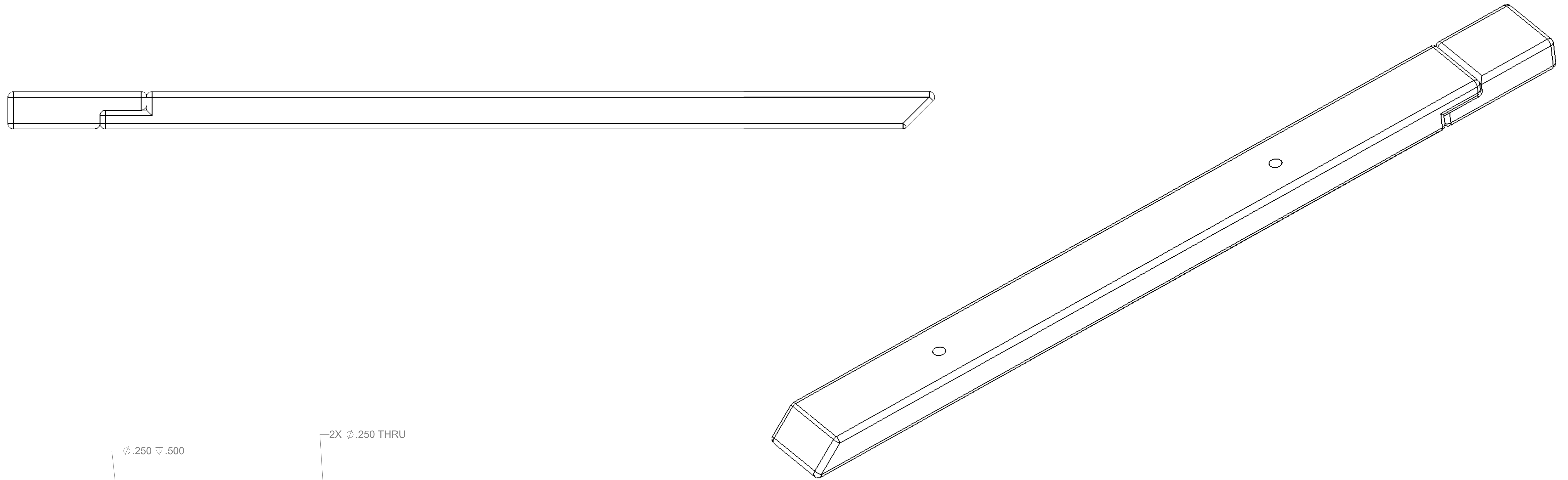
B



# B

# A

# A

2		1		
REVISION HISTORY				
REV	DESCRIPTION OF CHANGE	DOC CONTROL SIGN & DATE	DRP SIGN	DATE
01	PREL REL			



MATERIAL (RoHS COMPLIANT UNLESS OTHERWISE NOTED) ABS BLACK (3D PRINTED)		UNLESS OTHERWISE SPECIFIED, DIMENSIONS ARE IN INCHES AND THE TOLERANCES LISTED BELOW APPLY (DIMENSIONS INCLUSIVE OF PLATING THICKNESS). REFER TO CAD MODEL FOR UNDIMENSIONED FEATURES. BREAK SHARP EDGES. MACHINE SURFACES 63		DRAWN DATE 09/12/2023		 <b>200 Prospect Street Waltham, MA 02454-9141</b>	
FINISH (RoHS COMPLIANT UNLESS OTHERWISE NOTED)		(MODEL REVISION)		DRAWN BY SAKIB AZGAR			
		<b>TOLERANCES</b>		ENGINEER SAKIB AZGAR			
		.X ±.03		THIRD ANGLE PROJECTION		SIZE <b>D</b>	
		.XX ±.01				DWG NO	
		.XXX ±.005				REVISION	
		.XXXX ±.0005					
		ANGLES ±0°30'					
INFORMATION CONTAINED HEREIN IS CONSIDERED PROPRIETARY TO NOVA BIOMEDICAL CORPORATION. RELEASE OF THIS INFORMATION IS TO FACILITATE THE MANUFACTURING, SERVICING, AND MAINTENANCE OF NOVA BIOMEDICAL CORPORATION EQUIPMENT ONLY. NOVA BIOMEDICAL CORPORATION ACCEPTS NO LIABILITY FOR ANY DAMAGE, LOSS, OR INJURY UNDER NO CIRCUMSTANCES SHALL THIS INFORMATION BE TRANSMITTED, REPRODUCED, DISCLOSED TO, OR USED BY ANY PERSON OR ORGANIZATION OTHER THAN THOSE ENGAGED IN SUCH ACTIVITIES WITHOUT THE EXPRESS WRITTEN CONSENT OF NOVA BIOMEDICAL CORPORATION.						DO NOT SCALE DRAWING SCALE 1:1 SHEET 1 OF 1	

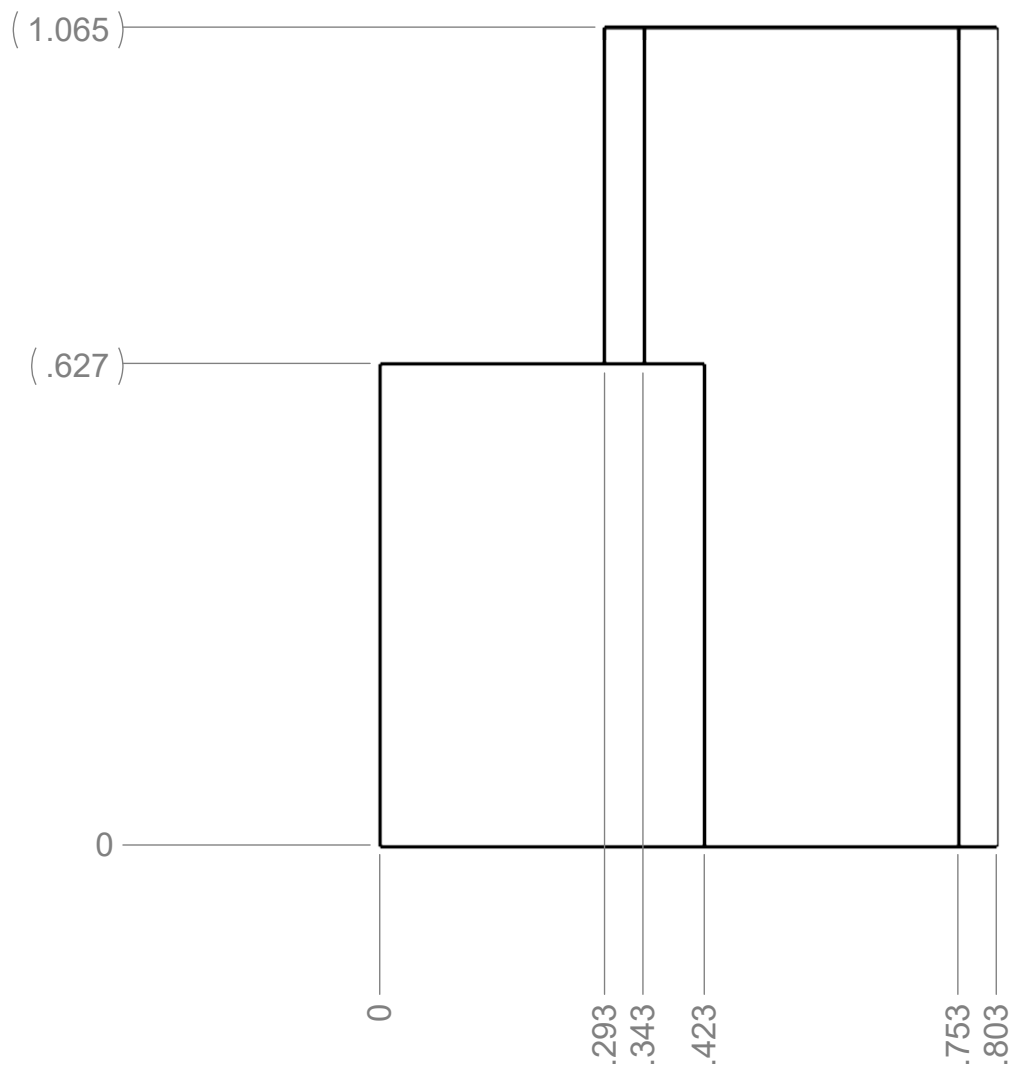
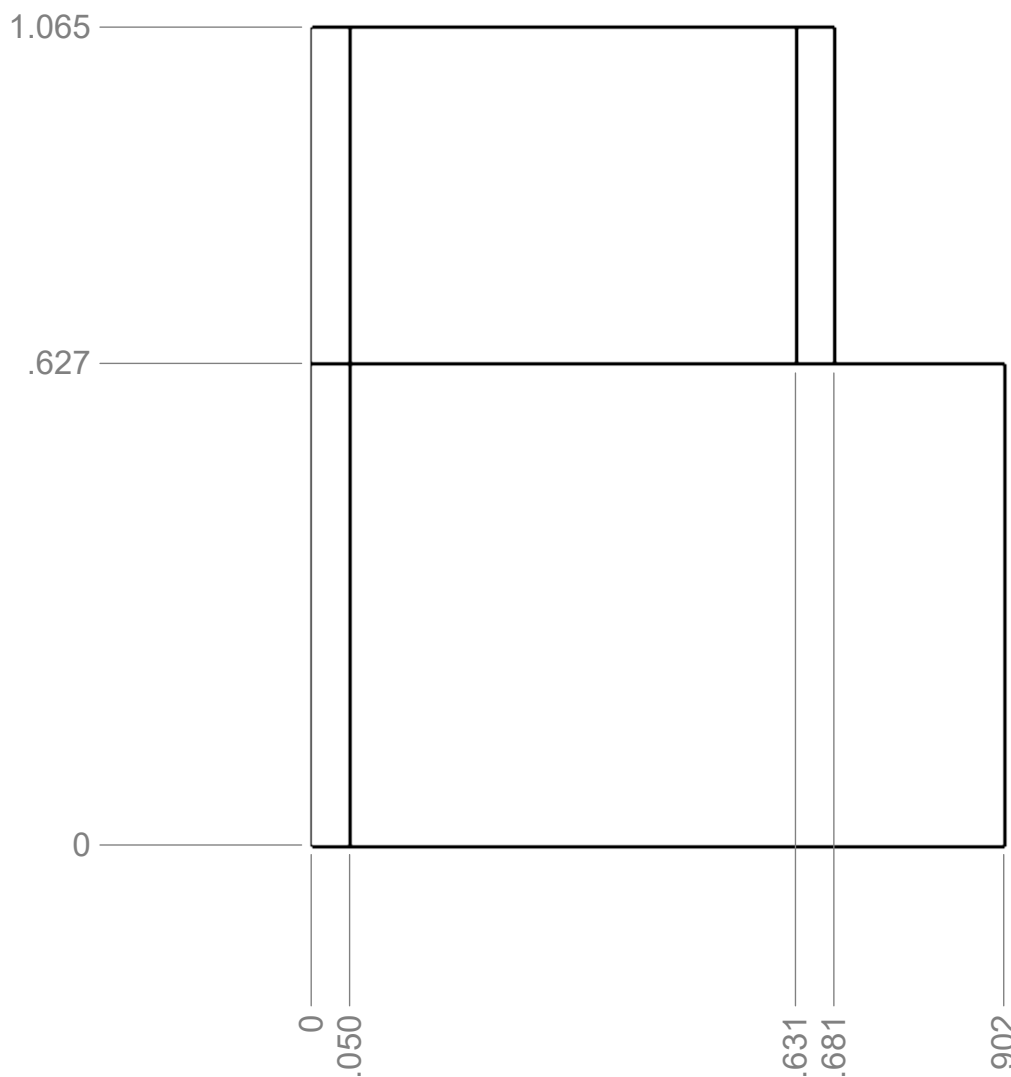
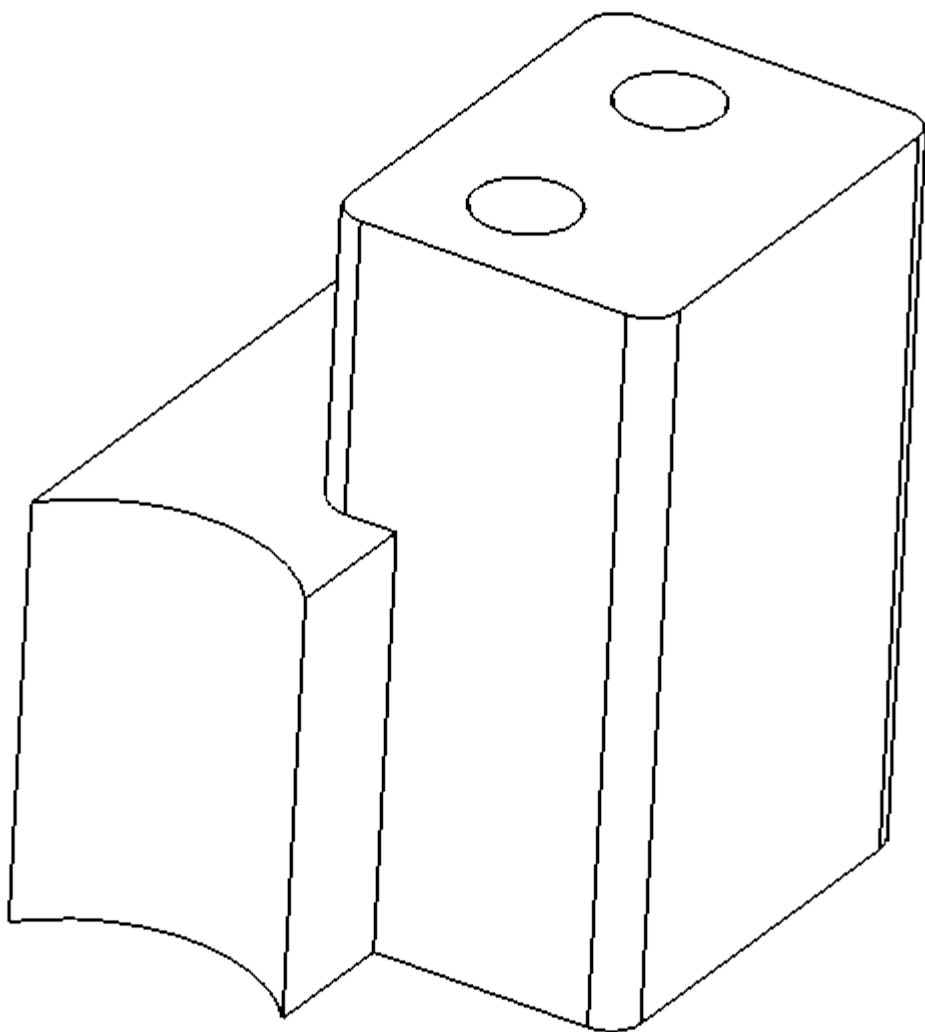
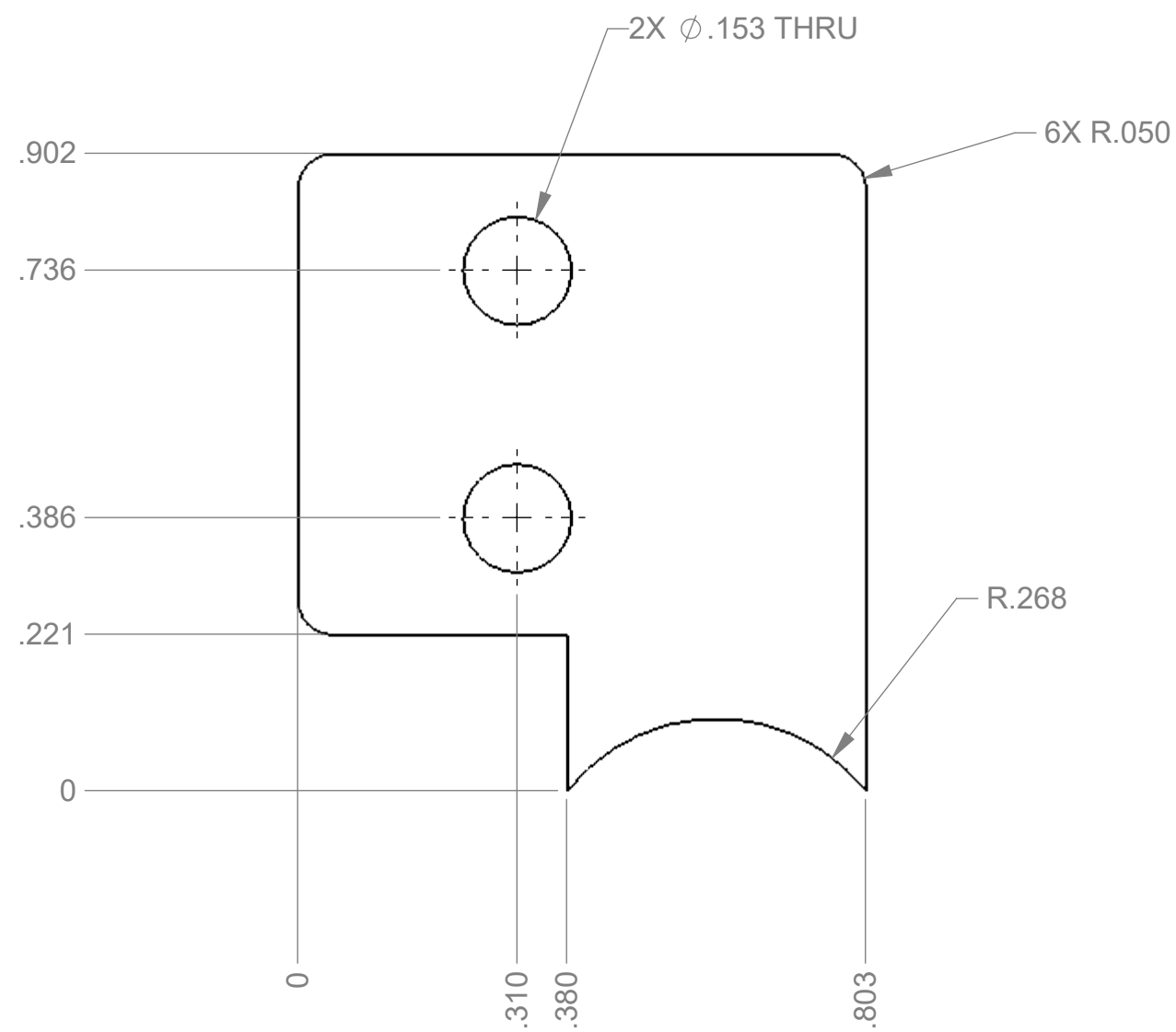


3


2

1

REVISION HISTORY				
REV	DESCRIPTION OF CHANGE	DOC CONTROL SIGN & DATE	DRP SIGN	DATE
01	PREL REL			



**Part Name: RECTANGULAR CURVE FIXTURE M1**

MATERIAL (RoHS COMPLIANT UNLESS OTHERWISE NOTED) ABS BLACK (3D PRINTED)		UNLESS OTHERWISE SPECIFIED, DIMENSIONS ARE IN INCHES AND THE TOLERANCES LISTED BELOW APPLY (DIMENSIONS INCLUSIVE OF PLATING THICKNESS). REFER TO CAD MODEL FOR UNDIMENSIONED FEATURES. BREAK SHARP EDGES. MACHINE SURFACES 63		DRAWN DATE 09/17/2023		<div><div><div>nova biomedical</div></div><div>200 Prospect Street Waltham, MA 02454-9141</div></div>				
FINISH (RoHS COMPLIANT UNLESS OTHERWISE NOTED)		(MODEL REVISION)	TOLERANCES		DRAWN BY SAKIB AZGAR		<div><div>Rectangular Curve Fixture M1</div><div><div>SIZE C</div><div>DWG NO</div><div>REVISION</div></div><div>DO NOT SCALE DRAWING</div><div>SCALE 4:1</div><div>SHEET 1 OF 2</div></div>			
			.X	±.03	ENGINEER SAKIB AZGAR					
			.XX	±.01	THIRD ANGLE PROJECTION					
			.XXX	±.005						
			.XXXX	±.0005						
			ANGLES	±0°30'						
<p>INFORMATION CONTAINED HEREIN IS CONSIDERED PROPRIETARY TO NOVA BIOMEDICAL CORPORATION. RELEASE OF THIS INFORMATION IS TO FACILITATE THE MANUFACTURING, SERVICING, AND MAINTENANCE OF NOVA BIOMEDICAL CORPORATION EQUIPMENT ONLY. UNDER NO CIRCUMSTANCES SHALL THIS INFORMATION BE TRANSMITTED, REPRODUCED, DISCLOSED TO, OR USED BY ANY PERSON OR ORGANIZATION OTHER THAN THOSE ENGAGED IN SUCH ACTIVITIES WITHOUT THE EXPRESS WRITTEN CONSENT OF NOVA BIOMEDICAL CORPORATION.</p>										

# 3

2

1

**C**

C

# B

# B

**A**

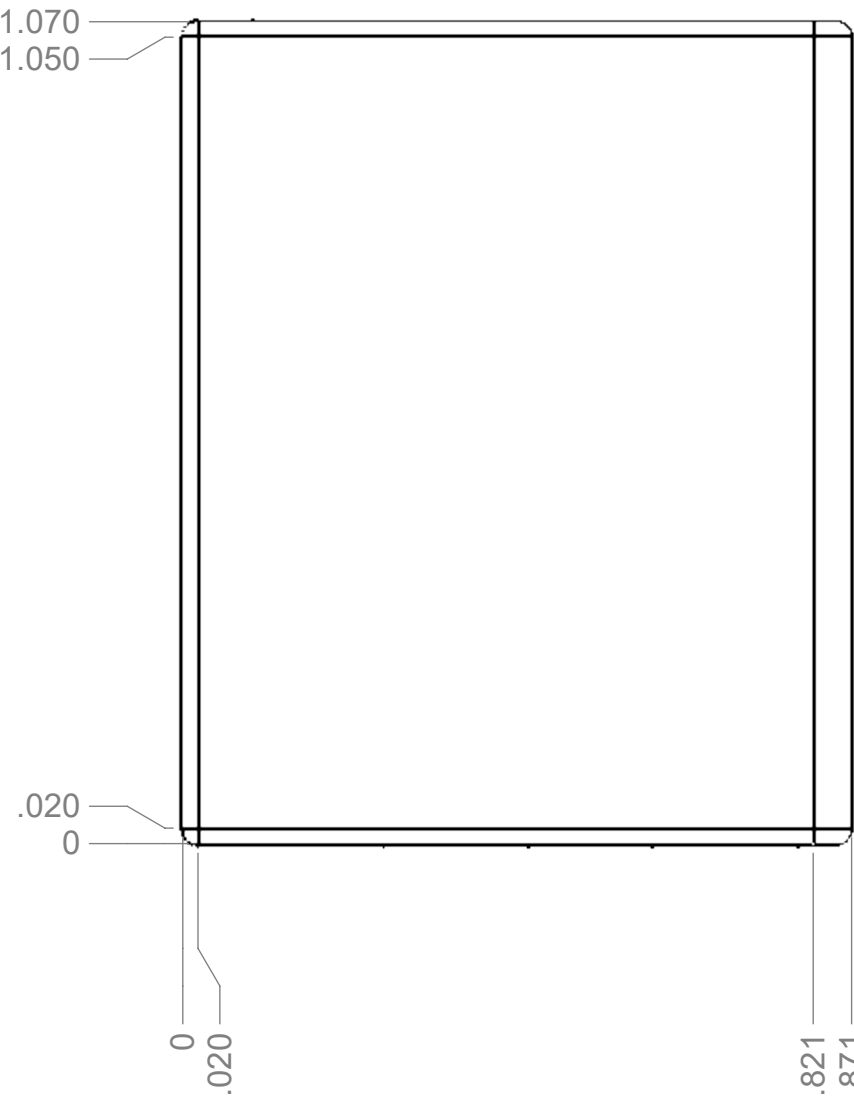
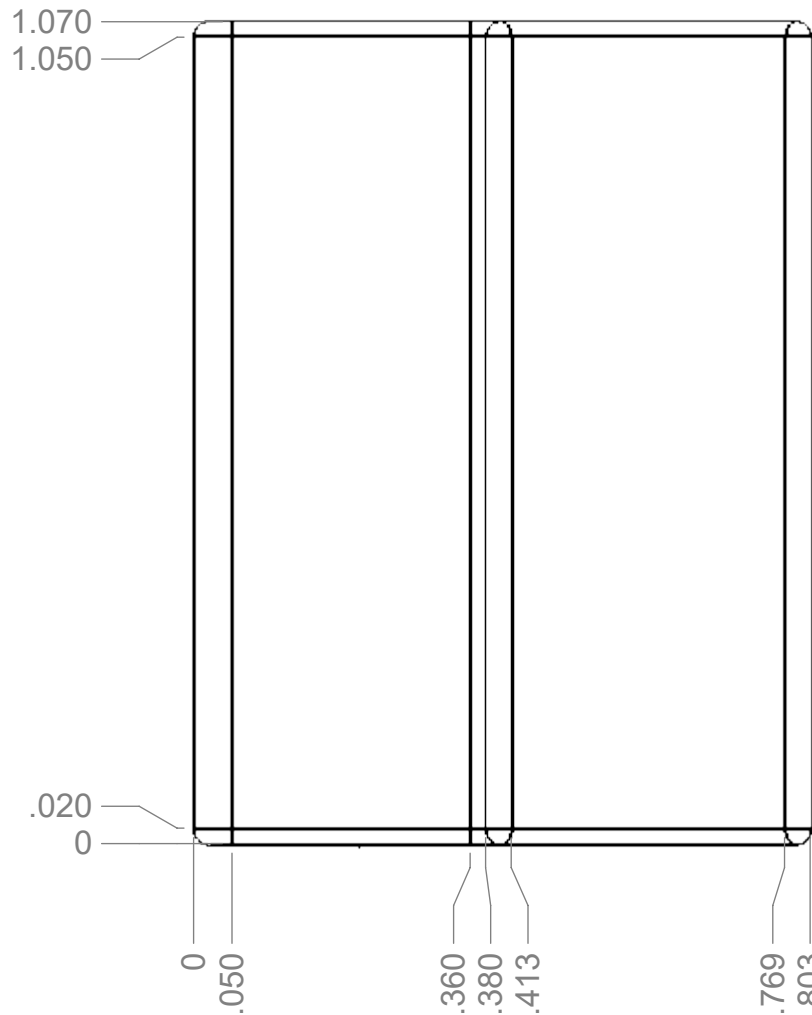
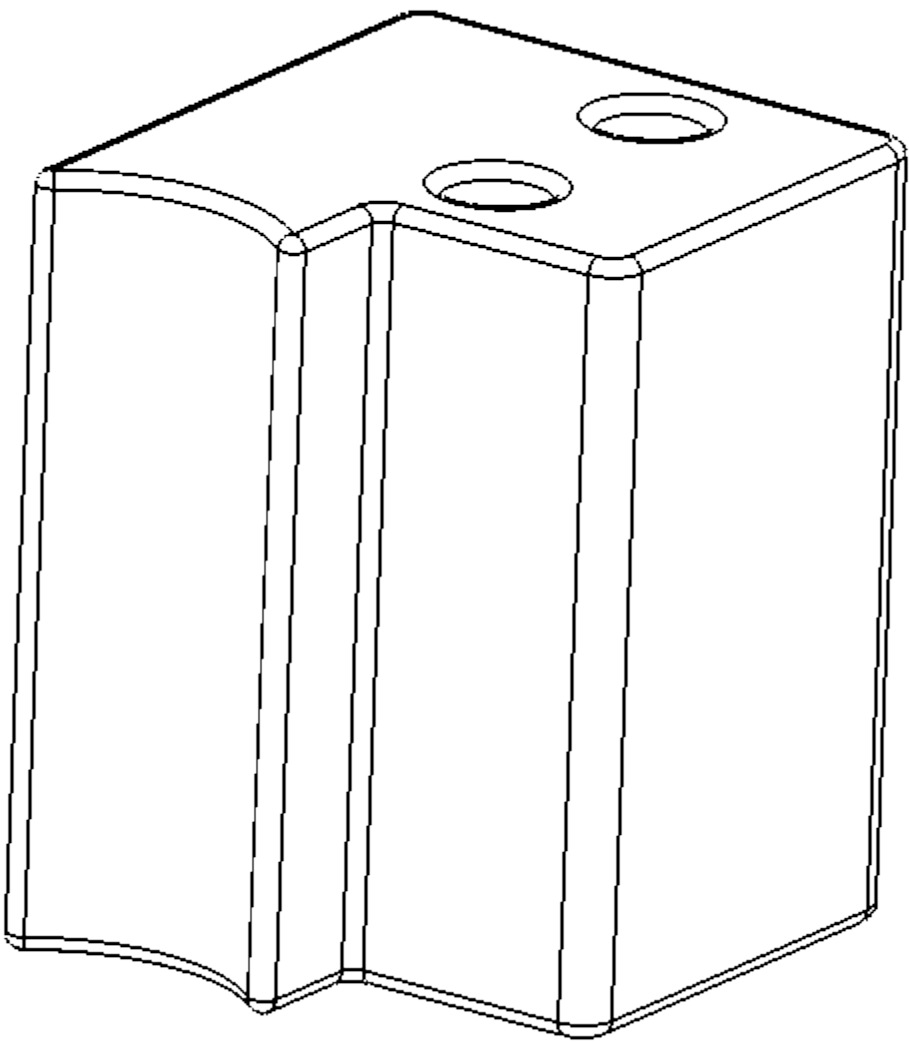
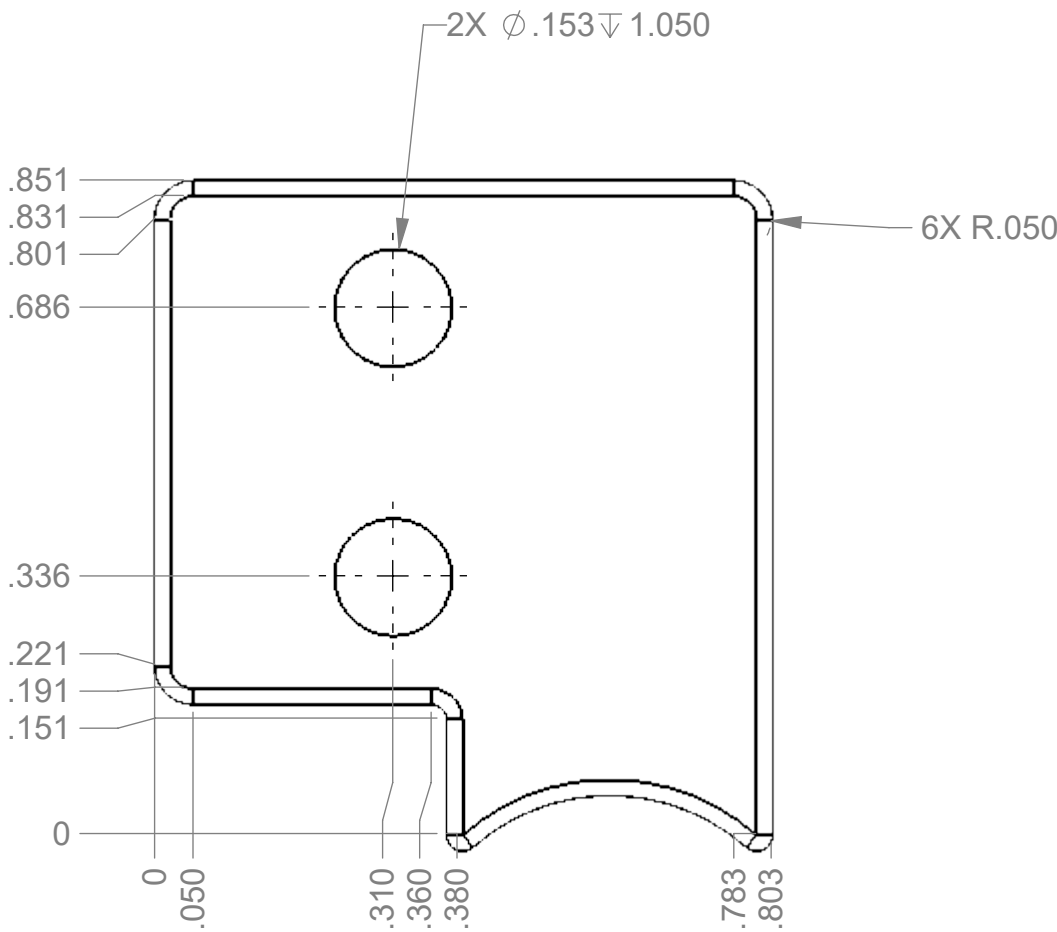
**A**

3

2

1

REVISION HISTORY  
SEE SHEET 1



Part Name: RECTANGULAR CURVE FIXTURE M2

**nova**  
biomedical 200 Prospect Street  
Waltham, MA 02454-9141

Rectangular Curve Fixture M2

SIZE	DWG NO	REVISION
C		
DO NOT SCALE DRAWING	SCALE 4:1	SHEET 2 OF 2

3

2

1



C

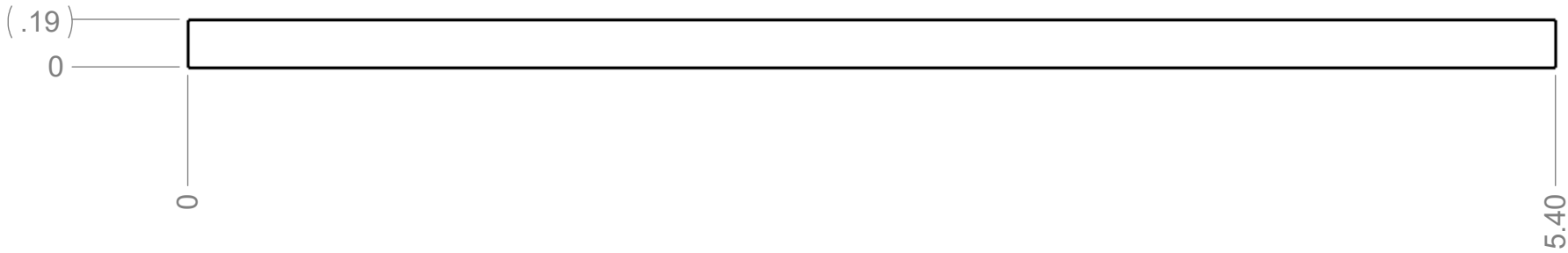
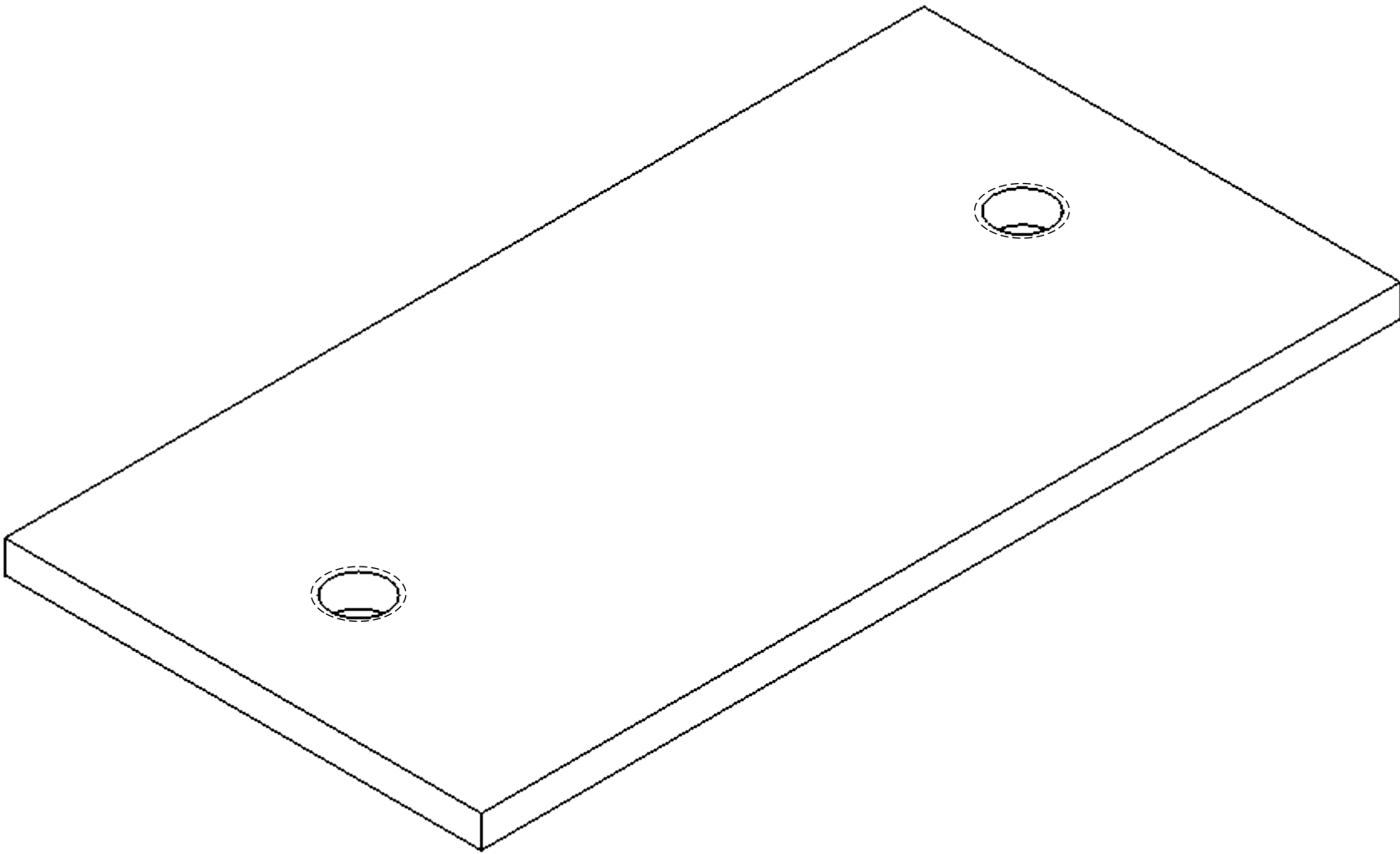
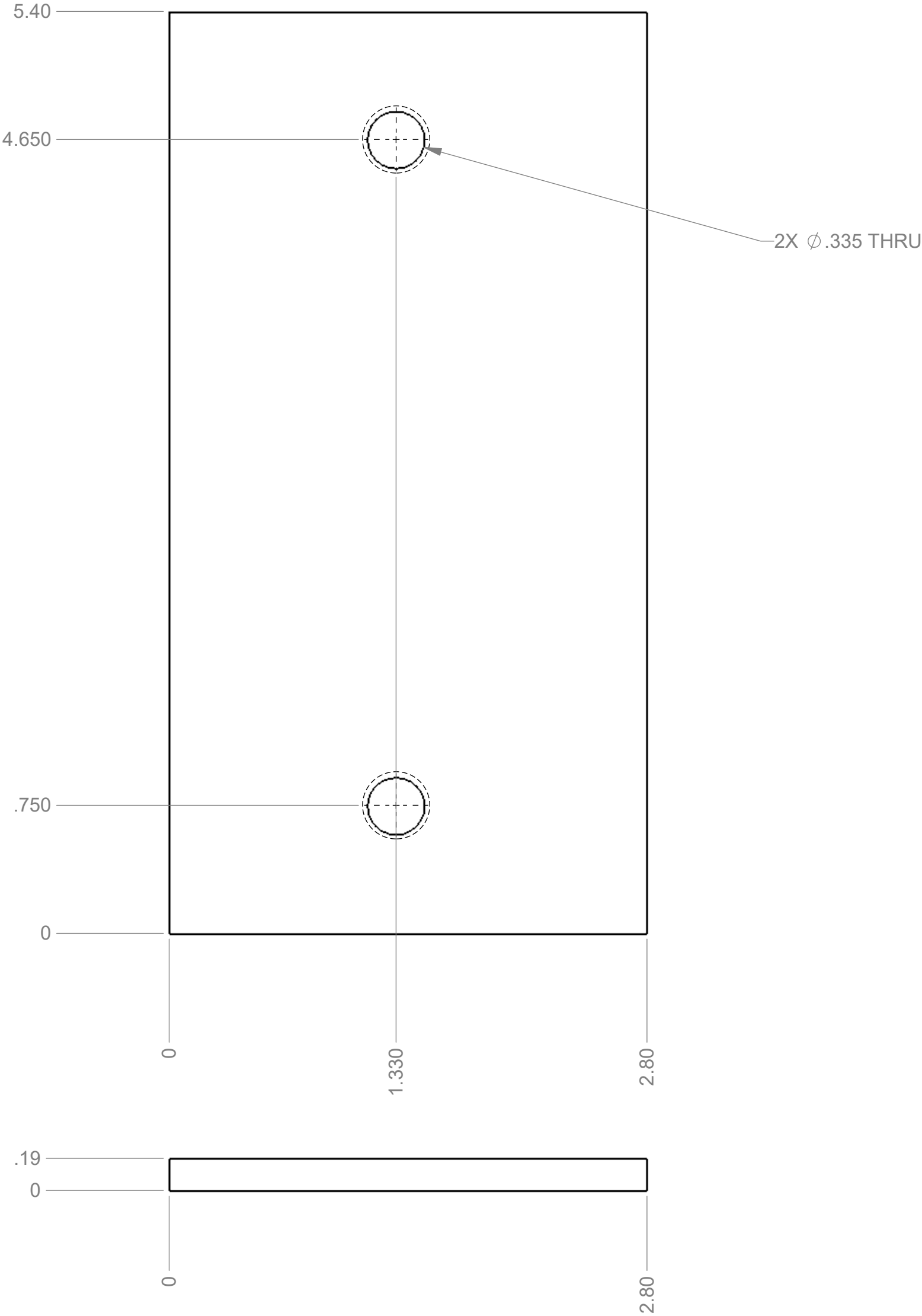
B

A

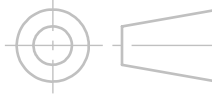
2

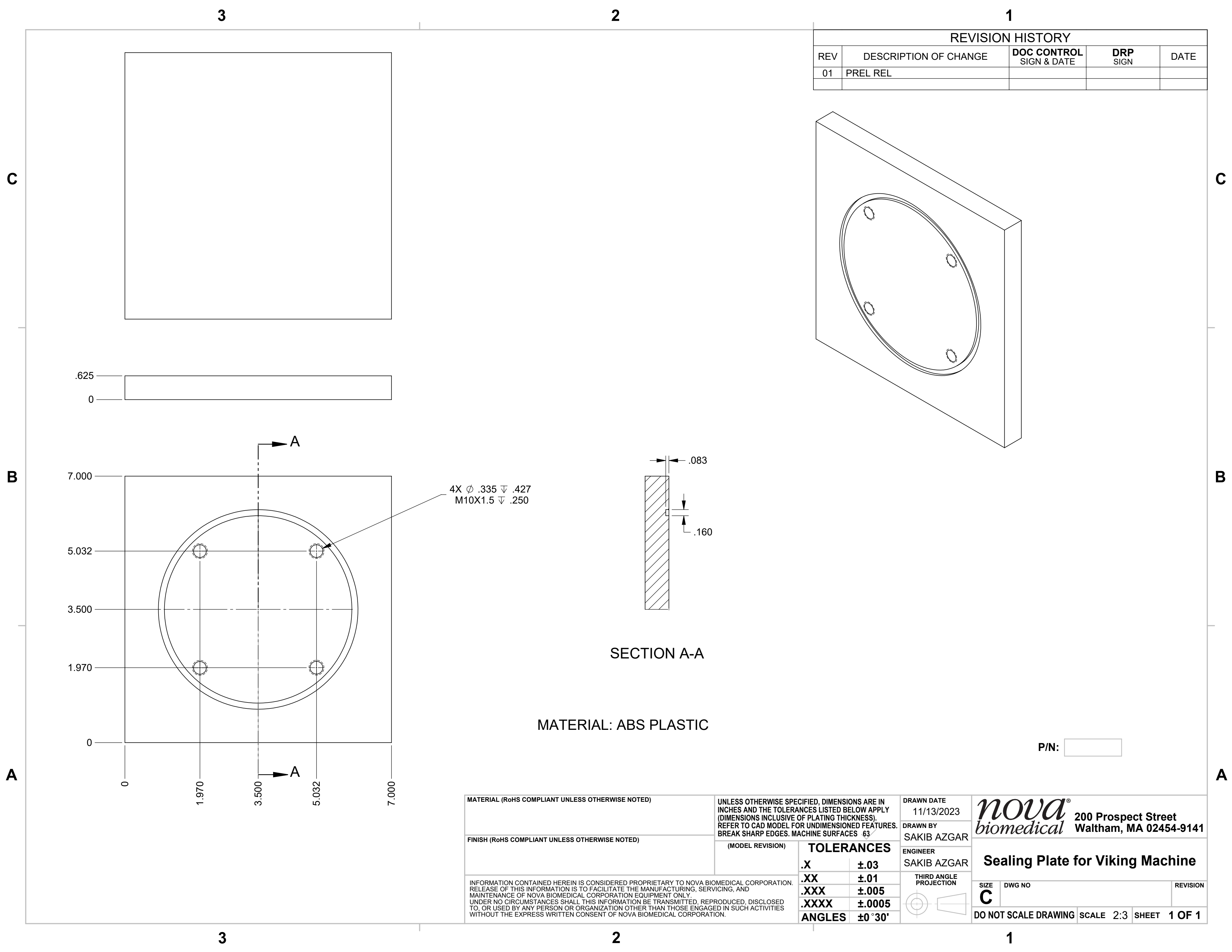
1

REVISION HISTORY				
REV	DESCRIPTION OF CHANGE	DOC CONTROL SIGN & DATE	DRP SIGN	DATE
01	PREL REL			

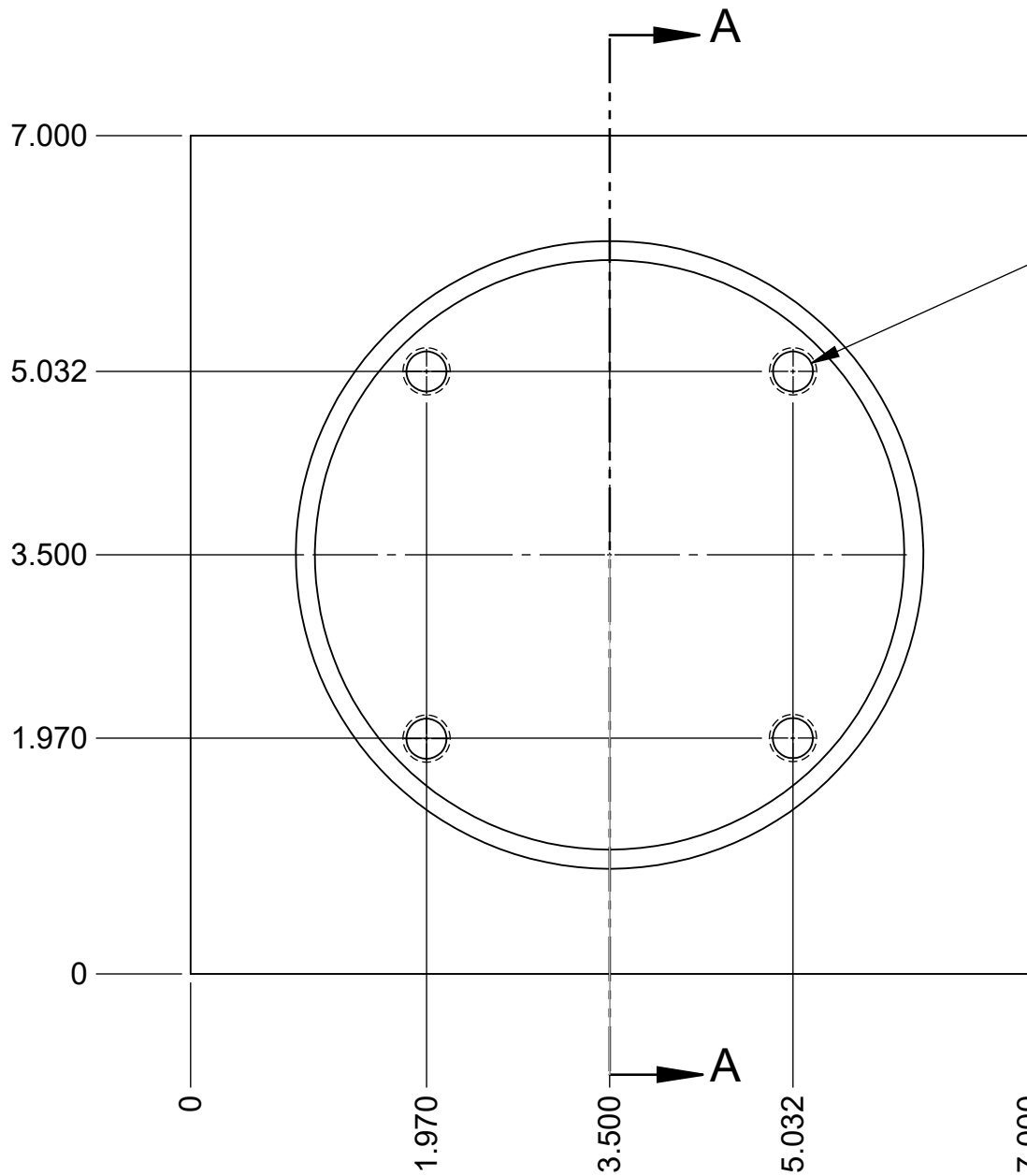
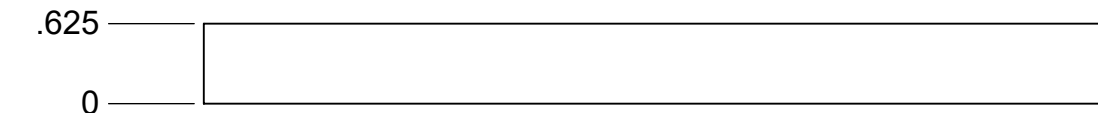
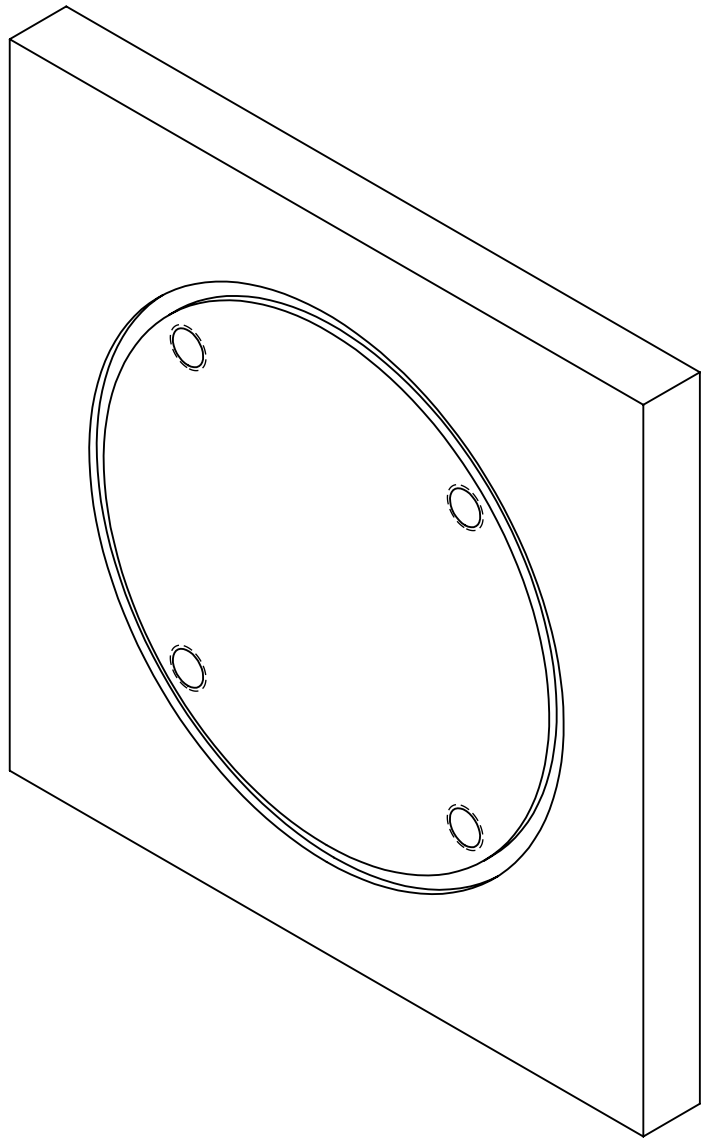


P/N:

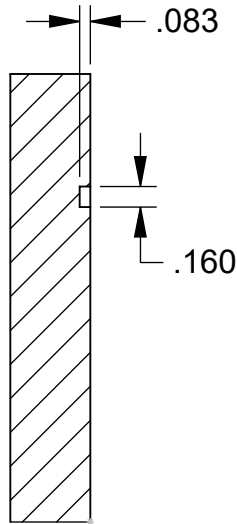
MATERIAL (RoHS COMPLIANT UNLESS OTHERWISE NOTED) ABS PLASTIC		UNLESS OTHERWISE SPECIFIED, DIMENSIONS ARE IN INCHES AND THE TOLERANCES LISTED BELOW APPLY (DIMENSIONS INCLUSIVE OF PLATING THICKNESS). REFER TO CAD MODEL FOR UNDIMENSIONED FEATURES. BREAK SHARP EDGES. MACHINE SURFACES 63		DRAWN DATE 11/08/2023		<div><div><div>nova<sup>®</sup></div><div>biomedical</div></div><div>200 Prospect Street Waltham, MA 02454-9141</div></div>				
FINISH (RoHS COMPLIANT UNLESS OTHERWISE NOTED)				DRAWN BY SAKIB AZGAR						
		(MODEL REVISION)	TOLERANCES		ENGINEER SAKIB AZGAR		<div>Rectangular Plate, Left Wall Hole Sealer, Viking Machine</div> <div><div><div>SIZE</div><div>C</div></div><div><div>DWG NO</div><div></div></div><div><div>REVISION</div><div></div></div></div> <div>DO NOT SCALE DRAWING</div> <div>SCALE 3:2</div> <div>SHEET 1 OF 1</div>			
INFORMATION CONTAINED HEREIN IS CONSIDERED PROPRIETARY TO NOVA BIOMEDICAL CORPORATION. RELEASE OF THIS INFORMATION IS TO FACILITATE THE MANUFACTURING, SERVICING, AND MAINTENANCE OF NOVA BIOMEDICAL CORPORATION EQUIPMENT ONLY. UNDER NO CIRCUMSTANCES SHALL THIS INFORMATION BE TRANSMITTED, REPRODUCED, DISCLOSED TO, OR USED BY ANY PERSON OR ORGANIZATION OTHER THAN THOSE ENGAGED IN SUCH ACTIVITIES WITHOUT THE EXPRESS WRITTEN CONSENT OF NOVA BIOMEDICAL CORPORATION.			.X ±.03		<div>THIRD ANGLE PROJECTION</div> <div></div>					
			.XX ±.01							
			.XXX ±.005							
			.XXXX ±.0005							
			ANGLES ±0°30'							



REVISION HISTORY				
REV	DESCRIPTION OF CHANGE	DOC CONTROL SIGN & DATE	DRP SIGN	DATE
01	PREL REL			




4X Ø .335  $\nabla$  .427  
M10X1.5  $\nabla$  .250



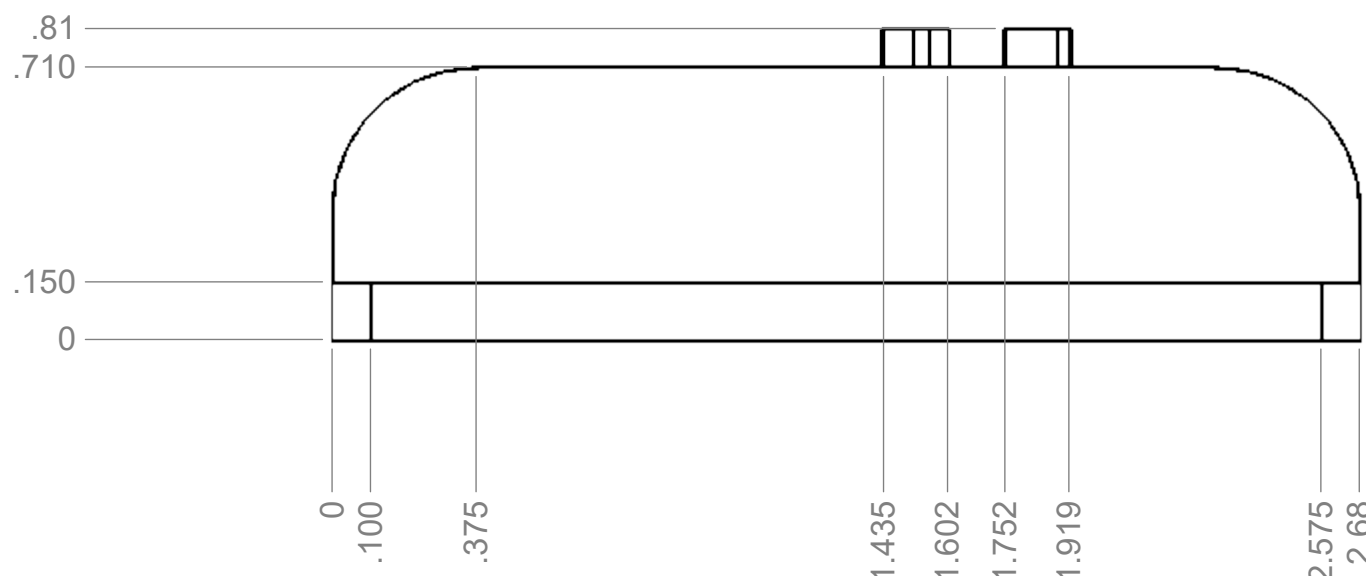
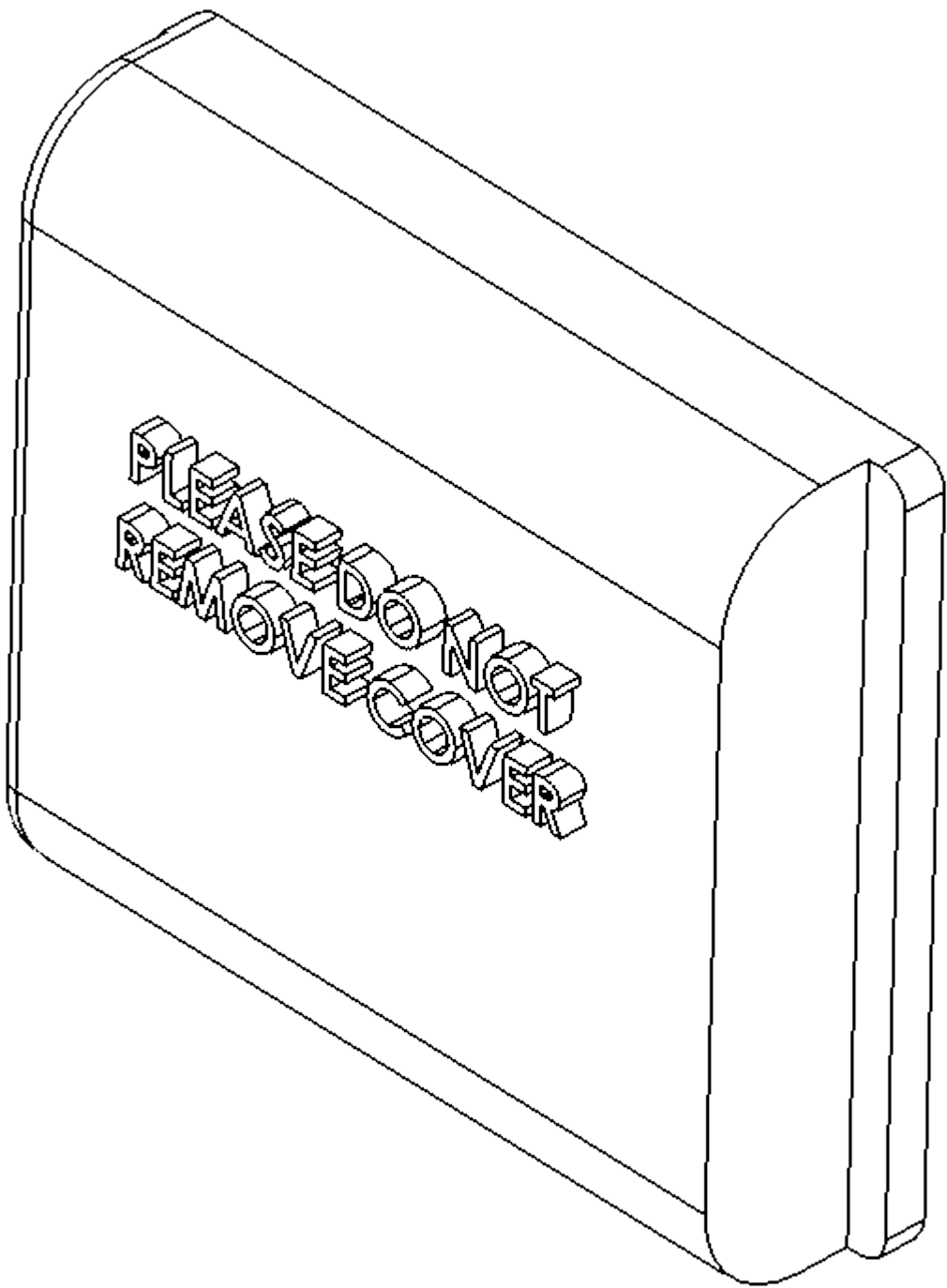
SECTION A-A

MATERIAL: ABS PLASTIC

P/N:

MATERIAL (RoHS COMPLIANT UNLESS OTHERWISE NOTED)		UNLESS OTHERWISE SPECIFIED, DIMENSIONS ARE IN INCHES AND THE TOLERANCES LISTED BELOW APPLY (DIMENSIONS INCLUSIVE OF PLATING THICKNESS). REFER TO CAD MODEL FOR UNDIMENSIONED FEATURES. BREAK SHARP EDGES. MACHINE SURFACES 63		DRAWN DATE 11/13/2023		<div><div><div>nova<sup>®</sup></div><div>biomedical</div></div><div>200 Prospect Street Waltham, MA 02454-9141</div></div>				
FINISH (RoHS COMPLIANT UNLESS OTHERWISE NOTED)		(MODEL REVISION)	TOLERANCES	DRAWN BY SAKIB AZGAR					ENGINEER SAKIB AZGAR	
INFORMATION CONTAINED HEREIN IS CONSIDERED PROPRIETARY TO NOVA BIOMEDICAL CORPORATION. RELEASE OF THIS INFORMATION IS TO FACILITATE THE MANUFACTURING, SERVICING, AND MAINTENANCE OF NOVA BIOMEDICAL CORPORATION EQUIPMENT ONLY. UNDER NO CIRCUMSTANCES SHALL THIS INFORMATION BE TRANSMITTED, REPRODUCED, DISCLOSED TO, OR USED BY ANY PERSON OR ORGANIZATION OTHER THAN THOSE ENGAGED IN SUCH ACTIVITIES WITHOUT THE EXPRESS WRITTEN CONSENT OF NOVA BIOMEDICAL CORPORATION.			.X	±.03	<div>THIRD ANGLE PROJECTION</div> <div></div>		SIZE		DWG NO	REVISION
			.XX	±.01			C			
			.XXX	±.005						
			.XXXX	±.0005						
			ANGLES	±0°30'						
						DO NOT SCALE DRAWING		SCALE 2:3	SHEET 1 OF 1	

1

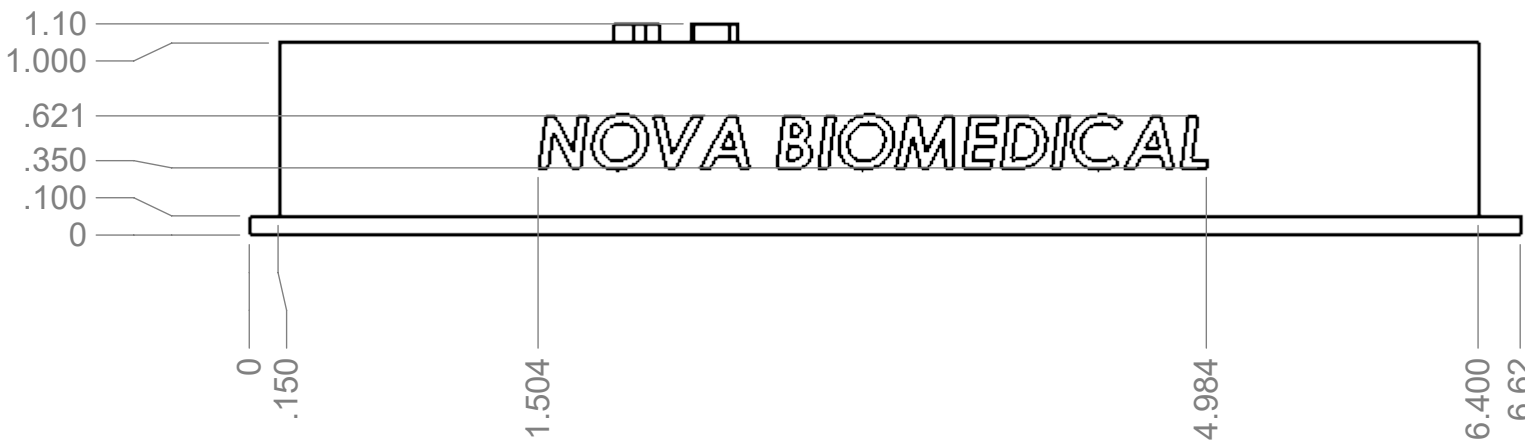
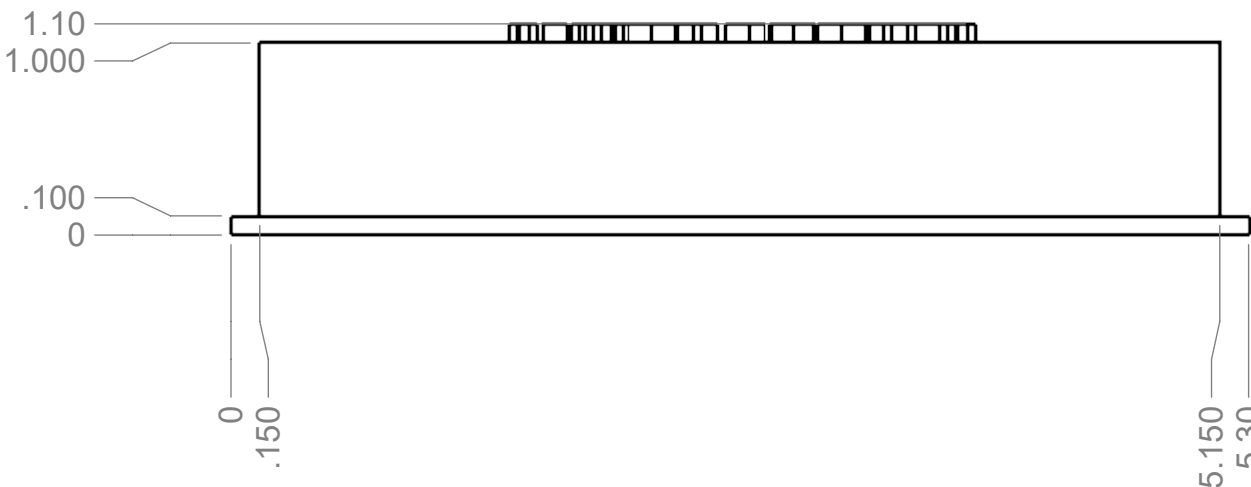
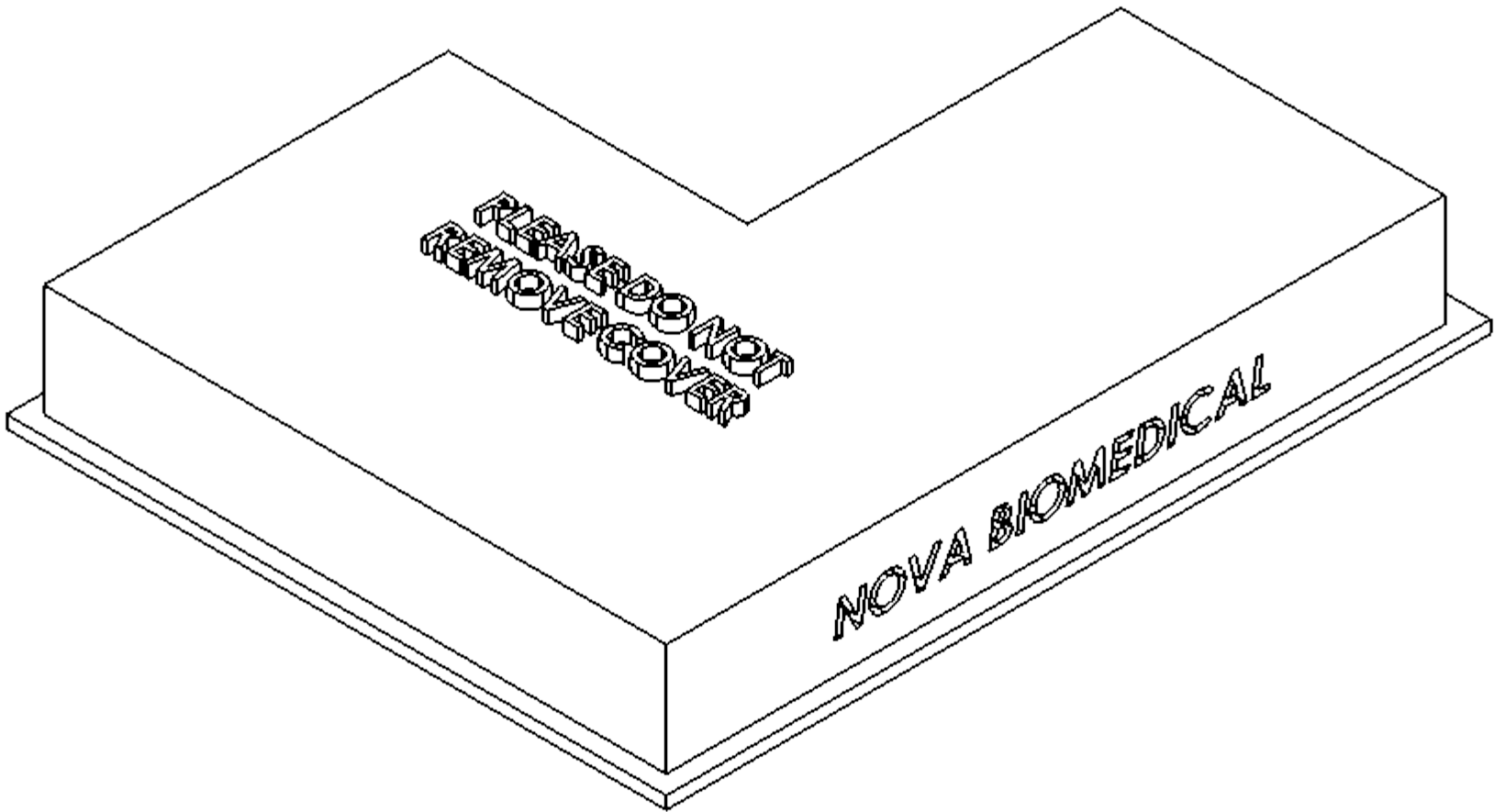
C

**A**

1

1

PLEASE DO NOT REMOVE COVER



<b>P/N:</b>	
-------------	--

1