

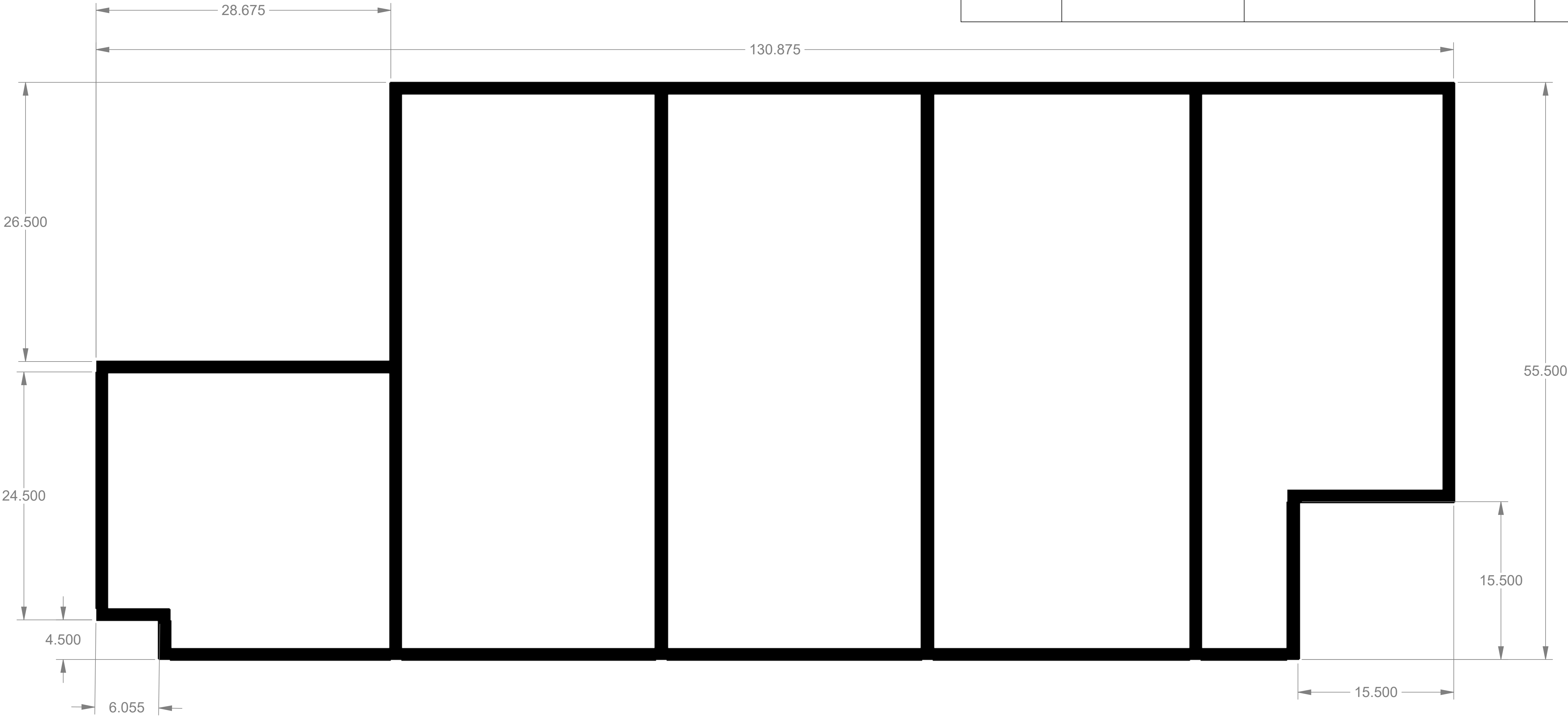
3

2


1

REVISION HISTORY				
REV	DESCRIPTION OF CHANGE	DOC CONTROL SIGN & DATE	DRP SIGN	DATE
01	PREL REL			

ITEM NO.	PART NUMBER	DESCRIPTION	QTY.
1	Clear Acrylic Sheet	SHEETS ARE INSERTED IN T-SLOTS	5
2	80-20 1010 Single Frame	Standard Framing	5
3	80-20 1020 Double Frame	Standard Double Framing	3



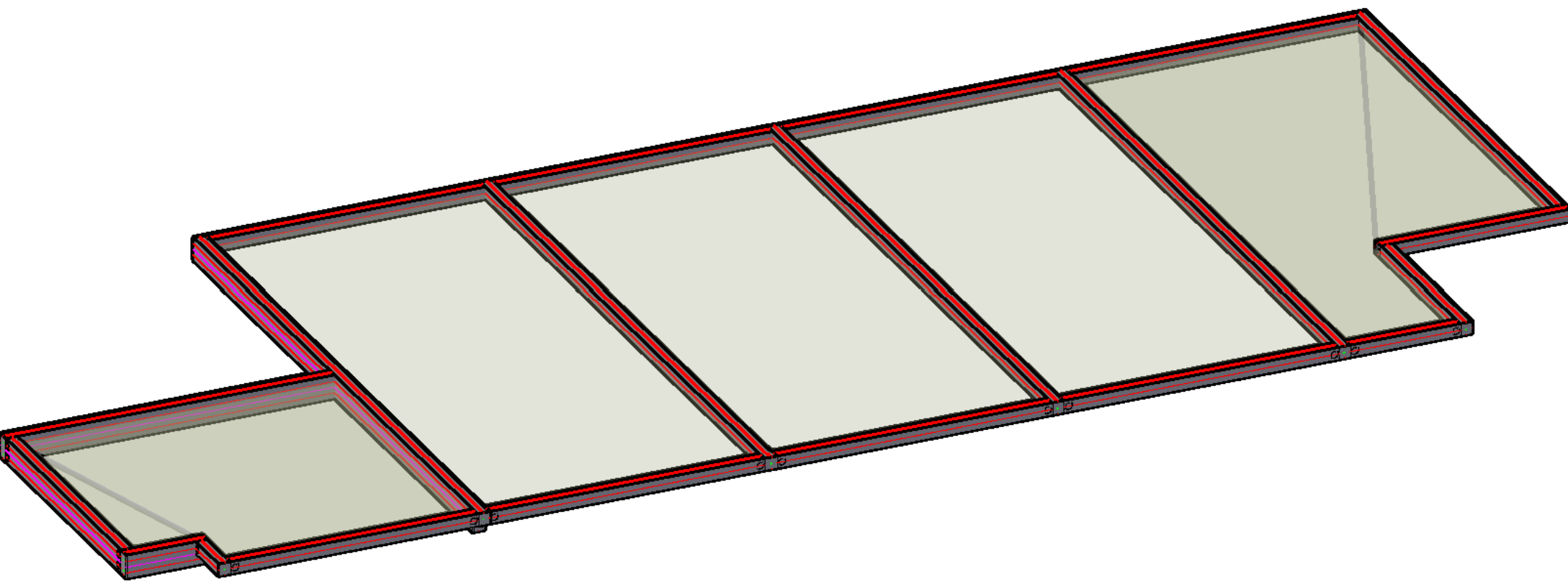
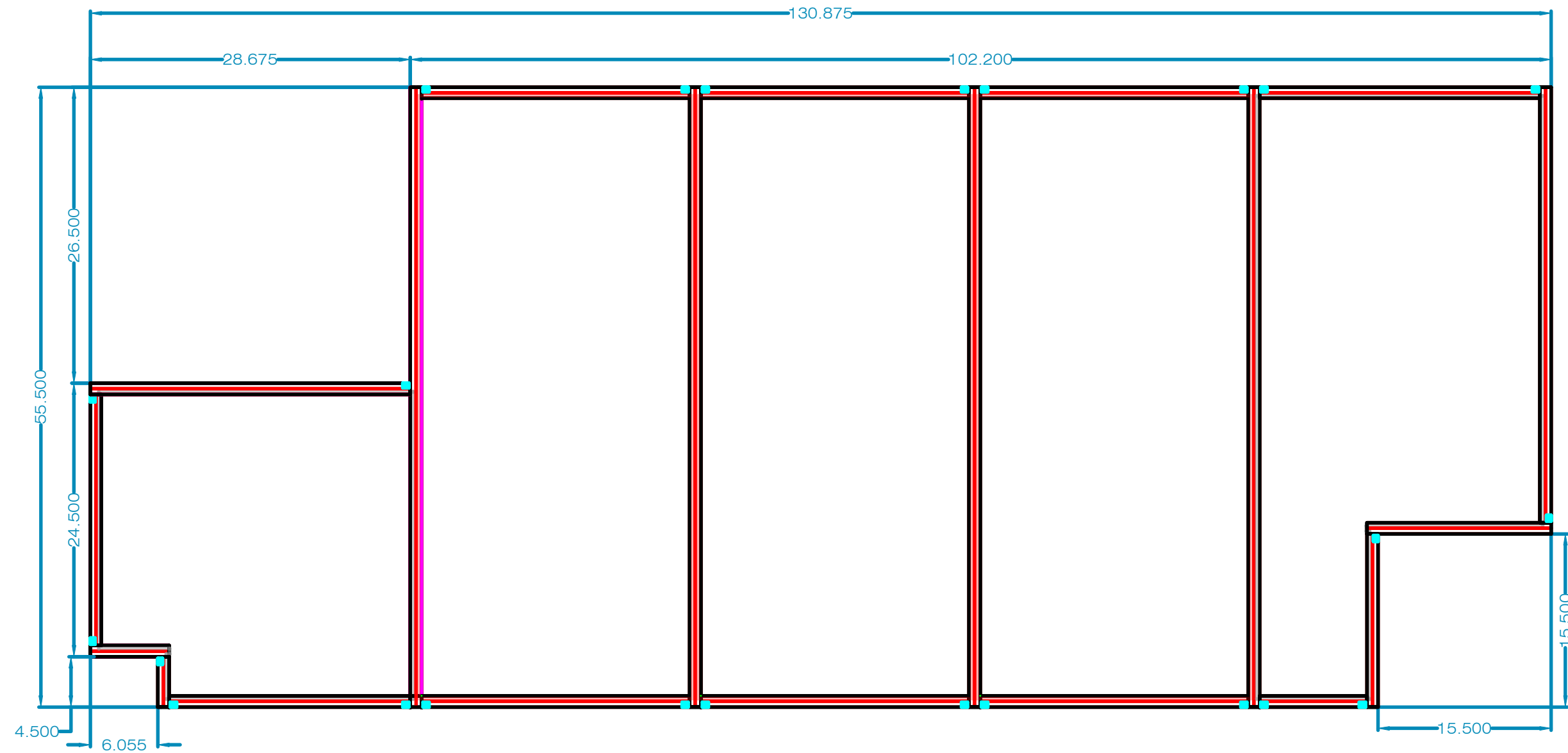
**DRAWING NAME: CONTROLS MACHINE ROOF**

MATERIAL (RoHS COMPLIANT UNLESS OTHERWISE NOTED) 80-20 FRAMING & CLEAR ACRYLIC SHEETS		UNLESS OTHERWISE SPECIFIED, DIMENSIONS ARE IN INCHES AND THE TOLERANCES LISTED BELOW APPLY (DIMENSIONS INCLUSIVE OF PLATING THICKNESS). REFER TO CAD MODEL FOR UNDIMENSIONED FEATURES. BREAK SHARP EDGES. MACHINE SURFACES 63		DRAWN DATE 09/21/2023		<div><div><div>nova<sup>®</sup></div><div>biomedical</div></div><div>200 Prospect Street Waltham, MA 02454-9141</div></div>		
FINISH (RoHS COMPLIANT UNLESS OTHERWISE NOTED)		(MODEL REVISION)	TOLERANCES		DRAWN BY SAKIB AZGAR			
INFORMATION CONTAINED HEREIN IS CONSIDERED PROPRIETARY TO NOVA BIOMEDICAL CORPORATION. RELEASE OF THIS INFORMATION IS TO FACILITATE THE MANUFACTURING, SERVICING, AND MAINTENANCE OF NOVA BIOMEDICAL CORPORATION EQUIPMENT ONLY. UNDER NO CIRCUMSTANCES SHALL THIS INFORMATION BE TRANSMITTED, REPRODUCED, DISCLOSED TO, OR USED BY ANY PERSON OR ORGANIZATION OTHER THAN THOSE ENGAGED IN SUCH ACTIVITIES WITHOUT THE EXPRESS WRITTEN CONSENT OF NOVA BIOMEDICAL CORPORATION.			.X ±.03		ENGINEER SAKIB AZGAR		<div><div>SIZE</div><div>DWG NO</div><div>REVISION</div></div> <div>DO NOT SCALE DRAWING</div> <div>SCALE 1:24</div> <div>SHEET 1 OF 1</div>	
			.XX ±.01		THIRD ANGLE PROJECTION			
			.XXX ±.005					
			.XXXX ±.0005					
			ANGLES ±0°30'					

# 3

2

1



RECEIVED PO IS ACKNOWLEDGEMENT AND APPROVAL OF DESIGN					
TITLE	Roof Framing w/ Clear Acrylic	DRAWN BY		DATE	10/3/2023
CUSTOMER	Sakib Azgar	REVISED BY		DATE	
JOB NO.		SHEET	Layout		

ALL TECHNICAL ADVICE, RECOMMENDATIONS AND SERVICES ARE RENDERED BY THE SELLER FREE OF CHARGE. THEY ARE BASED ON TECHNICAL DATA WHICH THE SELLER BELIEVES TO BE RELIABLE AND ARE INTENDED FOR USE BY SKILLED PERSONS AT THEIR OWN RISK. THE SELLER ASSUMES NO RESPONSIBILITY TO BUYER FOR RESULTS OBTAINED OR DAMAGES INCURRED FROM THEIR USE. SUCH RECOMMENDATIONS, TECHNICAL ADVICE OR SERVICES ARE NOT TO BE TAKEN AS A LICENSE TO OPERATE UNDER OR INTENDED TO SUGGEST INFRINGEMENT OF ANY EXISTING PATENT.

