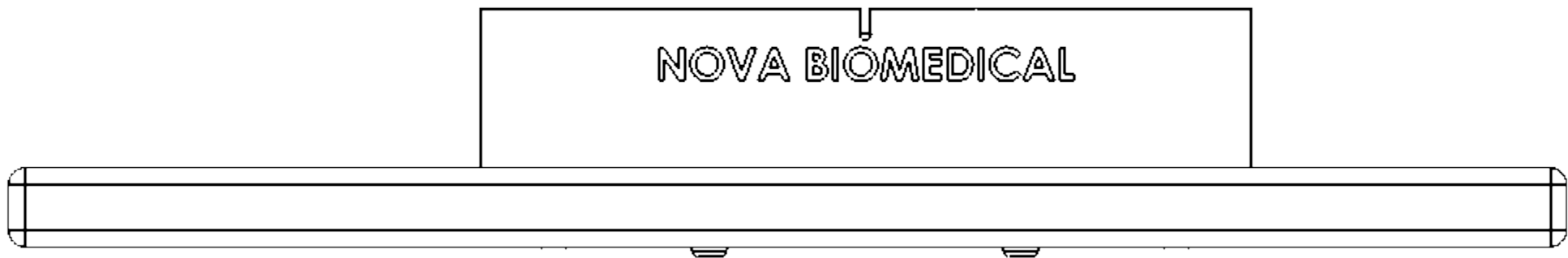
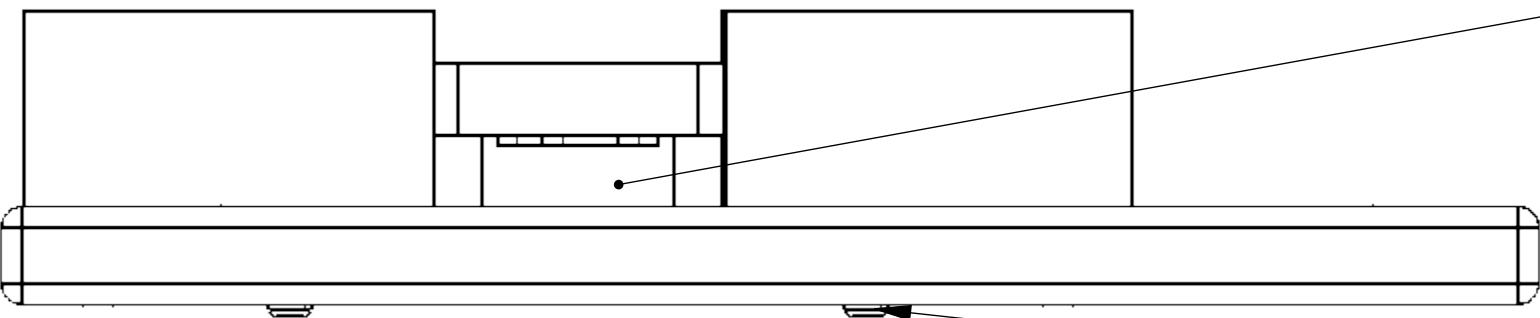
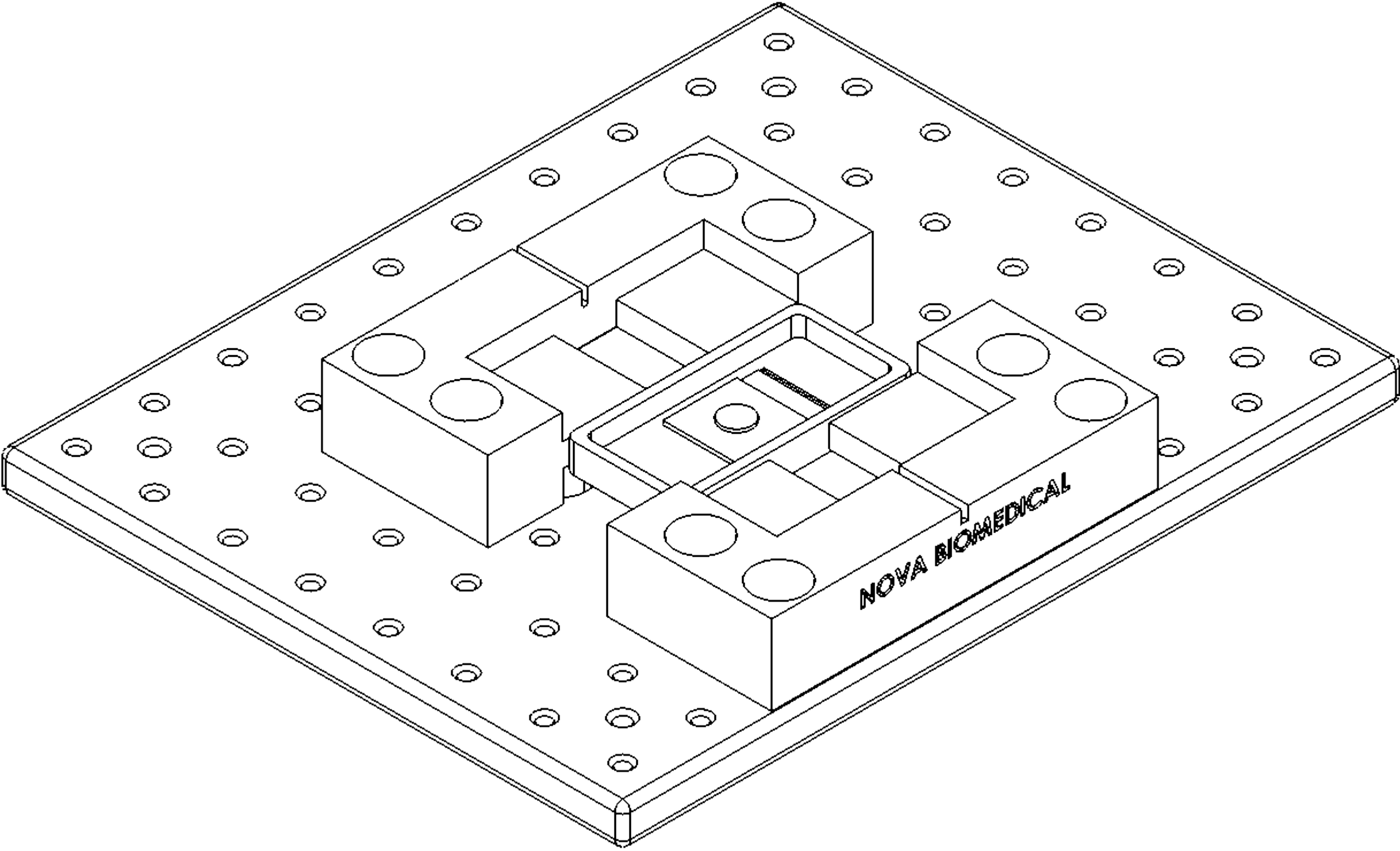
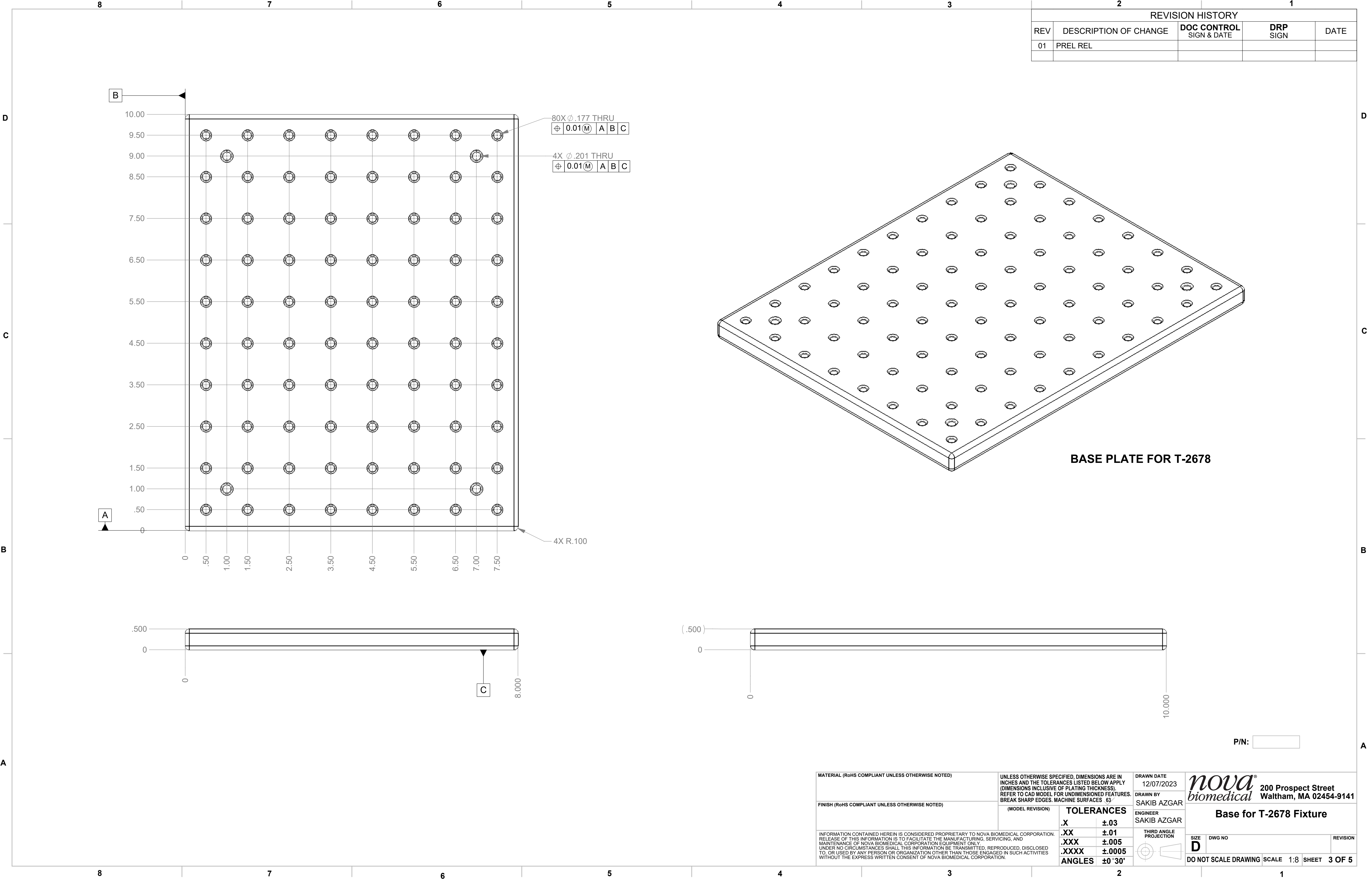


REVISION HISTORY				
REV	DESCRIPTION OF CHANGE	DOC CONTROL SIGN & DATE	DRP SIGN	DATE
01	PREL REL			
ITEM NO.	PART NUMBER	DESCRIPTION		QTY.
1	Version 2 Base Plate for T-2678	Base for T-2678 Fixture		1
2	Version 2 T-2678			1
3	91255A817	Button Head Hex Drive Screw		4
4	Version 2_T-2706	GAP GAUGE ASSEMBLY		1
5	Left Side Version 2 Cover for T-2678	Acrylic Cover for T-2678		1
6	91255A273	Button Head Hex Drive Screw		8
7	Right Side Version 2 Cover for T-2678	Acrylic Cover for T-2678		1




P/N:

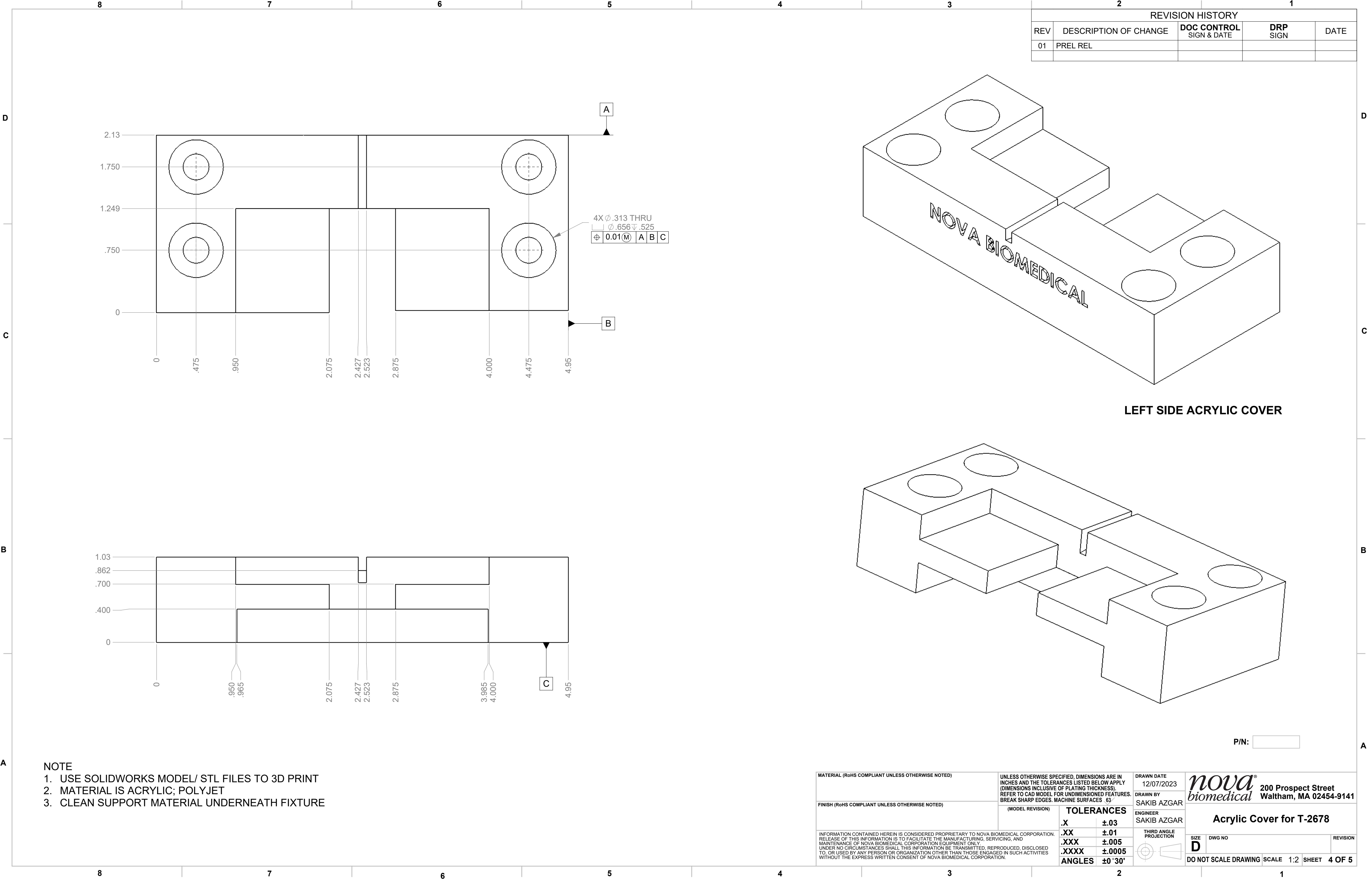
MATERIAL (RoHS COMPLIANT UNLESS OTHERWISE NOTED)		UNLESS OTHERWISE SPECIFIED, DIMENSIONS ARE IN INCHES AND THE TOLERANCES LISTED BELOW APPLY (DIMENSIONS INCLUSIVE OF PLATING THICKNESS). REFER TO CAD MODEL FOR UNDIMENSIONED FEATURES. BREAK SHARP EDGES. MACHINE SURFACES .63		DRAWN DATE 12/07/2023		<div><div><div>nova[®]</div><div>biomedical</div></div><div>200 Prospect Street Waltham, MA 02454-9141</div></div>	
FINISH (RoHS COMPLIANT UNLESS OTHERWISE NOTED)		(MODEL REVISION)		DRAWN BY SAKIB AZGAR			
INFORMATION CONTAINED HEREIN IS CONSIDERED PROPRIETARY TO NOVA BIOMEDICAL CORPORATION. RELEASE OF THIS INFORMATION IS TO FACILITATE THE MANUFACTURING, SERVICING, AND MAINTENANCE OF NOVA BIOMEDICAL CORPORATION EQUIPMENT ONLY. UNDER NO CIRCUMSTANCES SHALL THIS INFORMATION BE TRANSMITTED, REPRODUCED, DISCLOSED TO, OR USED BY ANY PERSON OR ORGANIZATION OTHER THAN THOSE ENGAGED IN SUCH ACTIVITIES WITHOUT THE EXPRESS WRITTEN CONSENT OF NOVA BIOMEDICAL CORPORATION.		TOLERANCES		ENGINEER SAKIB AZGAR		<div>T-2678 Assembly w T-2706 Tool</div> <div><div>SIZE</div><div>D</div><div>DWG NO</div></div> <div>DO NOT SCALE DRAWING</div> <div><div>SCALE</div><div>1:2</div></div> <div><div>SHEET</div><div>2 OF 5</div></div>	
		.X ±.03		<div><div></div><div></div></div>			
		.XX ±.01					
		.XXX ±.005					
		.XXXX ±.0005					
		ANGLES ±0°30'					
				<div>REVISION</div>			



REVISION HISTORY				
REV	DESCRIPTION OF CHANGE	DOC CONTROL SIGN & DATE	DRP SIGN	DATE
01	PREL REL			

P/N:

MATERIAL (RoHS COMPLIANT UNLESS OTHERWISE NOTED)		UNLESS OTHERWISE SPECIFIED, DIMENSIONS ARE IN INCHES AND THE TOLERANCES LISTED BELOW APPLY (DIMENSIONS INCLUSIVE OF PLATING THICKNESS). REFER TO CAD MODEL FOR UNDIMENSIONED FEATURES. BREAK SHARP EDGES. MACHINE SURFACES .63"		DRAWN DATE 12/07/2023		<div><div>nova[®]</div><div>biomedical</div></div> <div>200 Prospect Street Waltham, MA 02454-9141</div>	
FINISH (RoHS COMPLIANT UNLESS OTHERWISE NOTED)		(MODEL REVISION)		DRAWN BY SAKIB AZGAR			
INFORMATION CONTAINED HEREIN IS CONSIDERED PROPRIETARY TO NOVA BIOMEDICAL CORPORATION. RELEASE OF THIS INFORMATION IS TO FACILITATE THE MANUFACTURING, SERVICING, AND MAINTENANCE OF NOVA BIOMEDICAL CORPORATION EQUIPMENT ONLY. UNDER NO CIRCUMSTANCES SHALL THIS INFORMATION BE TRANSMITTED, REPRODUCED, DISCLOSED TO, OR USED BY ANY PERSON OR ORGANIZATION OTHER THAN THOSE ENGAGED IN SUCH ACTIVITIES WITHOUT THE EXPRESS WRITTEN CONSENT OF NOVA BIOMEDICAL CORPORATION.		<div>THIRD ANGLE PROJECTION</div> 		ENGINEER SAKIB AZGAR		<div>Base for T-2678 Fixture</div> <div><div>SIZE D</div><div>DWG NO</div></div> <div>DO NOT SCALE DRAWING</div> <div><div>SCALE 1:8</div><div>SHEET 3 OF 5</div></div>	
				TOLERANCES			
				.X ±.03			
				.XX ±.01			
				.XXX ±.005			
				.XXXX ±.0005			
ANGLES ±0°30'							

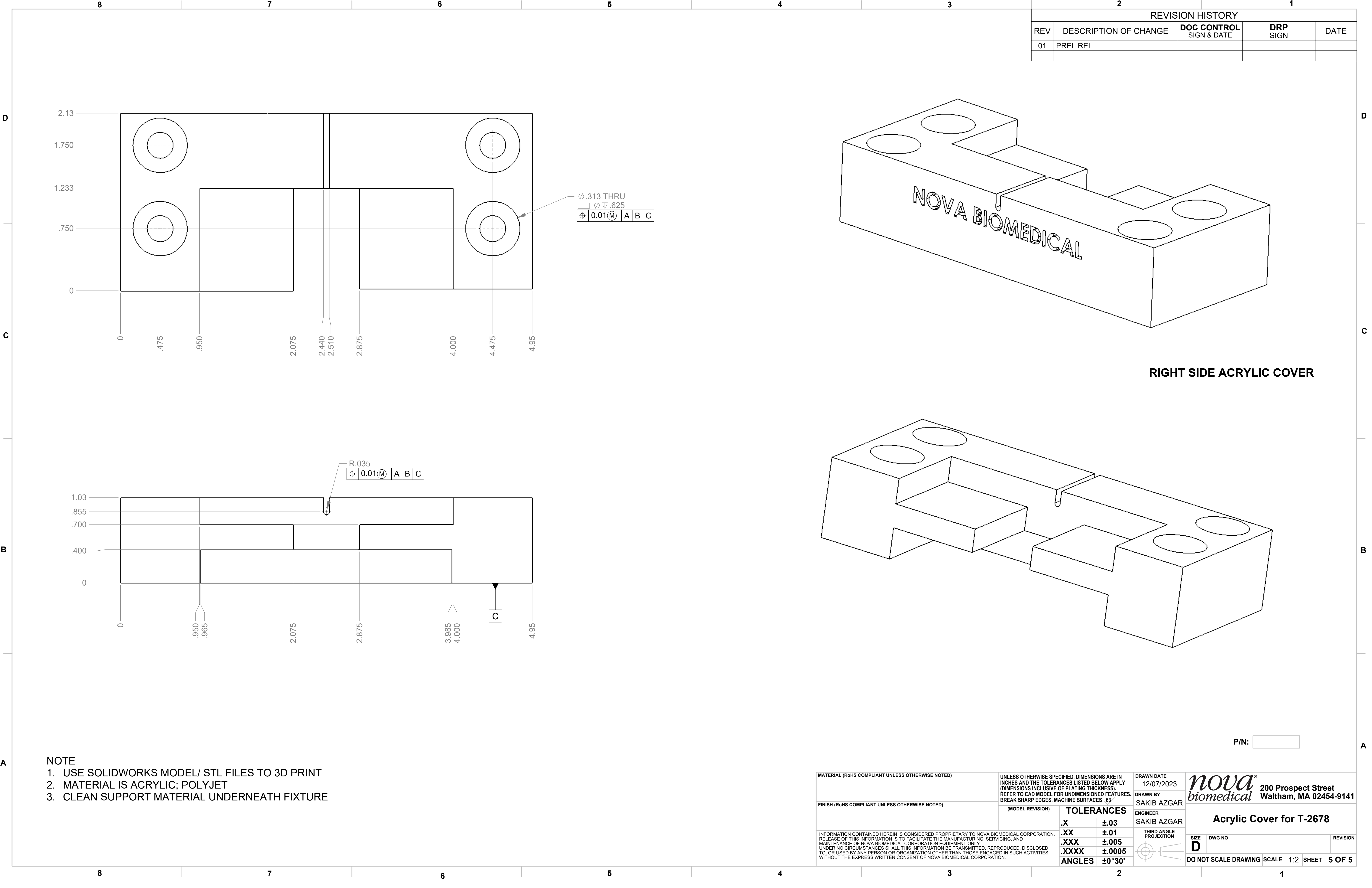


REVISION HISTORY				
REV	DESCRIPTION OF CHANGE	DOC CONTROL SIGN & DATE	DRP SIGN	DATE
01	PREL REL			

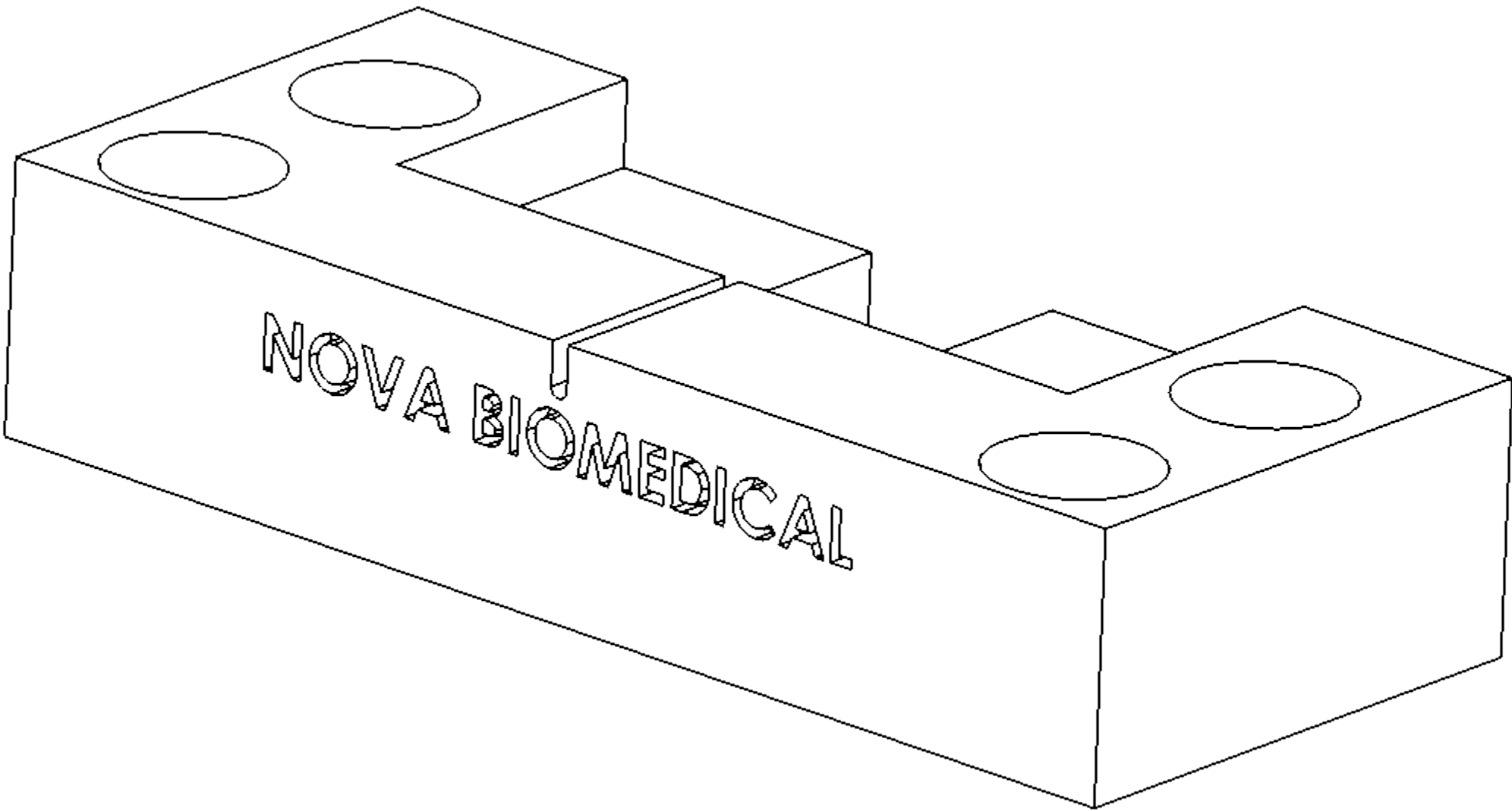
LEFT SIDE ACRYLIC COVER

- NOTE
- USE SOLIDWORKS MODEL/ STL FILES TO 3D PRINT
 - MATERIAL IS ACRYLIC; POLYJET
 - CLEAN SUPPORT MATERIAL UNDERNEATH FIXTURE

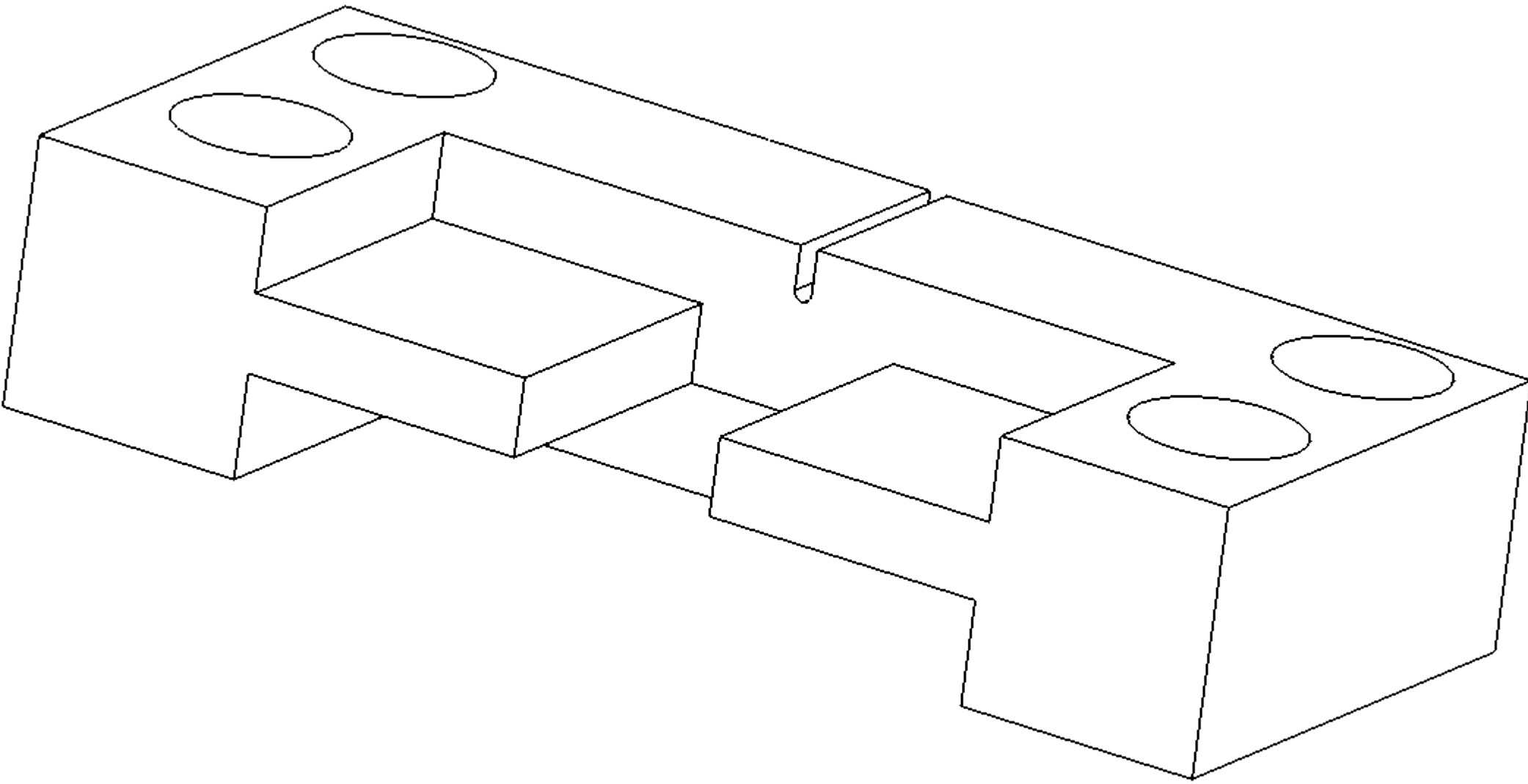
MATERIAL (RoHS COMPLIANT UNLESS OTHERWISE NOTED)		UNLESS OTHERWISE SPECIFIED, DIMENSIONS ARE IN INCHES AND THE TOLERANCES LISTED BELOW APPLY (DIMENSIONS INCLUSIVE OF PLATING THICKNESS). REFER TO CAD MODEL FOR UNDIMENSIONED FEATURES. BREAK SHARP EDGES. MACHINE SURFACES .63		DRAWN DATE 12/07/2023		<div><div><div>nova[®]</div><div>biomedical</div></div><div>200 Prospect Street Waltham, MA 02454-9141</div></div>	
FINISH (RoHS COMPLIANT UNLESS OTHERWISE NOTED)		(MODEL REVISION)		DRAWN BY SAKIB AZGAR			
INFORMATION CONTAINED HEREIN IS CONSIDERED PROPRIETARY TO NOVA BIOMEDICAL CORPORATION. RELEASE OF THIS INFORMATION IS TO FACILITATE THE MANUFACTURING, SERVICING, AND MAINTENANCE OF NOVA BIOMEDICAL CORPORATION EQUIPMENT ONLY. UNDER NO CIRCUMSTANCES SHALL THIS INFORMATION BE TRANSMITTED, REPRODUCED, DISCLOSED TO, OR USED BY ANY PERSON OR ORGANIZATION OTHER THAN THOSE ENGAGED IN SUCH ACTIVITIES WITHOUT THE EXPRESS WRITTEN CONSENT OF NOVA BIOMEDICAL CORPORATION.		TOLERANCES		ENGINEER SAKIB AZGAR		<div>Acrylic Cover for T-2678</div> <div><div><div>SIZE</div><div>D</div></div><div>DWG NO</div><div>DO NOT SCALE DRAWING</div><div>REVISION</div></div>	
		.X ±.03		THIRD ANGLE PROJECTION			
		.XX ±.01					
		.XXX ±.005					
		.XXXX ±.0005					
		ANGLES ±0°30'					



REVISION HISTORY				
REV	DESCRIPTION OF CHANGE	DOC CONTROL SIGN & DATE	DRP SIGN	DATE
01	PREL REL			



RIGHT SIDE ACRYLIC COVER



- NOTE
1. USE SOLIDWORKS MODEL/ STL FILES TO 3D PRINT
 2. MATERIAL IS ACRYLIC; POLYJET
 3. CLEAN SUPPORT MATERIAL UNDERNEATH FIXTURE

MATERIAL (RoHS COMPLIANT UNLESS OTHERWISE NOTED)		UNLESS OTHERWISE SPECIFIED, DIMENSIONS ARE IN INCHES AND THE TOLERANCES LISTED BELOW APPLY (DIMENSIONS INCLUSIVE OF PLATING THICKNESS). REFER TO CAD MODEL FOR UNDIMENSIONED FEATURES. BREAK SHARP EDGES. MACHINE SURFACES 63°		DRAWN DATE 12/07/2023		<div><div>nova[®]</div><div>biomedical</div><div>200 Prospect Street Waltham, MA 02454-9141</div></div>	
FINISH (RoHS COMPLIANT UNLESS OTHERWISE NOTED)		(MODEL REVISION)		DRAWN BY SAKIB AZGAR			
INFORMATION CONTAINED HEREIN IS CONSIDERED PROPRIETARY TO NOVA BIOMEDICAL CORPORATION. RELEASE OF THIS INFORMATION IS TO FACILITATE THE MANUFACTURING, SERVICING, AND MAINTENANCE OF NOVA BIOMEDICAL CORPORATION EQUIPMENT ONLY. UNDER NO CIRCUMSTANCES SHALL THIS INFORMATION BE TRANSMITTED, REPRODUCED, DISCLOSED TO, OR USED BY ANY PERSON OR ORGANIZATION OTHER THAN THOSE ENGAGED IN SUCH ACTIVITIES WITHOUT THE EXPRESS WRITTEN CONSENT OF NOVA BIOMEDICAL CORPORATION.		TOLERANCES		ENGINEER SAKIB AZGAR		<div>Acrylic Cover for T-2678</div> <div><div>SIZE D</div><div>DWG NO</div><div>DO NOT SCALE DRAWING</div></div> <div><div>REVISION</div><div>SCALE 1:2</div><div>SHEET 5 OF 5</div></div>	
		.X ±.03		<div><div>THIRD ANGLE PROJECTION</div><div></div></div>			
		.XX ±.01					
		.XXX ±.005					
		.XXXX ±.0005					
		ANGLES ±0°30'					